



COLLECTIVE REMARKS

VOLUME 1 ISSUE 11 — NOVEMBER 2011

COLLECTIVE REMARKS— WWW.ESDCTA.ORG

PAGE 1

UPCOMING

DEADLINES:

**November 5 =Year
End Awards Deadline**

**December 1 =
Membership Renewal
Deadline**

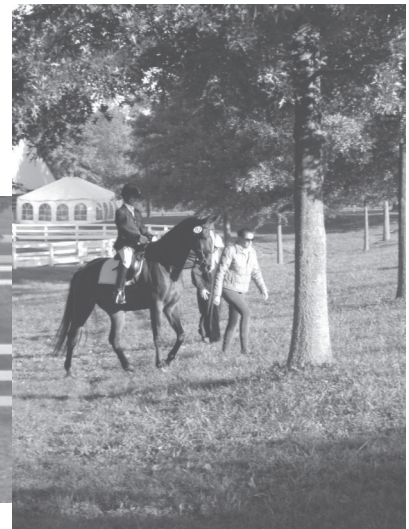
Inside this issue:

| | |
|-----------------------------------------------------------------|-------|
| <i>Garden State Classic</i> | 1 |
| <i>GMO Newsletter Award Winner</i> | 1 |
| <i>President's Message</i> | 2 |
| <i>ESDCTA Statement of Purpose</i> | 3 |
| <i>Cross Country: Community Calendar Community News</i> | 4 |
| <i>Year-End Awards Announcement</i> | 5 |
| <i>Centerline—Dressage News</i> | 6 |
| <i>Championship Nerves</i> | 8 |
| <i>Foalin' Around Youth News</i> | 9 |
| <i>Omnibus Information</i> | 10 |
| <i>Salute!</i> | 13 |
| <i>Eventing News</i> | 14 |
| <i>Show Results</i> | 15-19 |
| <i>Horse Treats</i> | 20 |
| <i>Business members</i> | 21-23 |
| <i>Calendar of Events</i> | 24 |

GARDEN STATE CLASSIC AND CBLM CHAMPIONSHIPS ESDCTA HOSTS ANOTHER GREAT SHOW



*Photos Courtesy of
Maryann Debski*



Photos continued on page 20

USDF GMO NEWSLETTER AWARD WINNER



ESDCTA's newsletter, *Collective Remarks*, was entered in three categories in this year's USDF GMO Newsletter Awards, with Veterinarian, Dr. Christina Wilson's article, "Smile! Your Horses' Teeth Need Your Attention," winning Best Original Article.

Congratulations to Dr. Wilson on her award. She is a veterinarian with the Califon Animal Hospital, serving both large and small animals. Her article appeared in the May issue of *Collective Remarks* and can be read on the ESDCTA's website, esdcta.org. The Award will be presented at this year's USDF's Convention during the Dec. 2 Banquet.

The other submissions to the competition were for an issue for Layout and Design in the 500-member category and a first person article by Ashley Maleson, "ESDCTA Youth Participate at YDF" in the August issue.

Dr. Christina Wilson & Jingles

ESDCTA also thanks the newsletter committee, Meredith Rogers, Megan Zureck, Diane Engler, and Susan Lax for their work every month to bring members news about the organization, dressage, and combined training. If you like to write, have experience in layout and design or wish to work on advertising and marketing, please join the committee! Email newsletter@esdcta.org for more information.

Board Of Trustees**OFFICERS**

| | | |
|------------------|--------------------------------------------------------------------------------------------|--------------|
| President | Susan Lax chivalryhillfarm@aol.com | 609.466.4178 |
| Vice President | Debbie DelGiorno debbdel@aol.com | 609.744.2265 |
| Treasurer | Marsha Montgomery 11 Indian Run Whitehouse Station, NJ 08889 treasurer@esdcta.org | 908.823.0112 |
| Secretary | Cindy Anderson cindya@bluebridle.com | 908.638.8381 |
| Members-at-Large | Holly Payne—Eventing holly@hollypayne.com | 908.334.3126 |
| | Jean Goeltz jgoeltz@optonline.net | 732-577-0272 |

TRUSTEES

| | | |
|-------------------|--------------------------------------------------------------------------|--------------|
| MEMBERSHIP | Diane Engler PO Box 185 Pipersville, PA 18947 kaboomer@epix.net | 610.730.0371 |
| Dressage | Terry Masters terrymasters@verizon.net | 609.912.9401 |
| Eventing | Nick Olijslager nick.olijslager@yahoo.com | 908.766.6291 |
| Youth | Jill Kuc esea@ptd.net | 610.681.6033 |
| | Heidi Lemack rblstables@aol.com | 609.758.4918 |
| | Cindy Roesener croesener@hotmail.com | 908.797.9754 |
| Education | Tara Bowles | 973.903.3722 |
| Awards | Melissa Pribic awards@esdcta.org | 610.762.9419 |
| Finance | Gary Maholic gmaholic@gmail.com | 215.489.1557 |
| NJEAB | Jessie Steiner JessieS731@aol.com | 561.358.6055 |
| Marketing | marketing@esdcta.org | |

**OFF-BOARD
COMMITTEE CHAIRS**

| | | |
|---------------------|----------------------------------------------------------------------------------------|--------------|
| Calendar/Activities | Cathy Brogan cathybrogan@yahoo.com | 908.510.799 |
| Grants | Debra Tomajko dtomajko@aol.com | 908.534.4901 |
| Nominating | Jen Morris JMorris@roe.com | 201.666.3661 |
| Omnibus | Cathy Brogan 176 Barbertown Idell Rd. Frenchtown, NJ 08825 Omnibus@esdcta.org | 908.510.7999 |
| Newsletter | newsletter@esdcta.org | |
| Webmaster | Lynette Moran webmaster@esdcta.org | 732.449.5322 |
| Show Results | Jean Goeltz results@esdcta.org | 732-577-0272 |

AFFILIATE LIAISONS**USDF**

| | | |
|------|-----------------------------------------------|--------------|
| USEA | Carey Williams cwilliams@aesop.rutgers.edu | 732.932.5529 |
|------|-----------------------------------------------|--------------|

Remember, you CAN make a difference!
Join a committee today!

Become a Friend to ESDCTA on Facebook!

PRESIDENT'S MESSAGE**IMPORTANT NEWS - A MUST READ!**

It's November! Deadlines are approaching if they are not already here!

MEMBERSHIP

First, you should have received your membership renewal applications by now. PLEASE notice the new renewal deadline of **December 1!** We have moved this deadline to be consistent with other organizations *and* to make sure that our organization does not have to wait for its members to renew when they start showing. We are a member-based organization and rely heavily on you for so many things that permit us to, in turn, provide services to you.

If you renew your membership by December 15, you will receive a free ESDCTA Omnibus. If you don't, you may purchase it by sending in an additional \$10 along with your renewal, plus postage of \$2.25 if you wish to have it mailed. Our previous methods of membership renewal were more cumbersome and received some criticism so we are changing it to reflect your input.

REGISTERED SHOWS

We are trying to publish the Omnibus by January 15, so everyone has its timely information *on time!* That means the show organizers have until December 15 to send their prize lists and payments to Cathy Brogan, our tireless Omnibus Editor.

That also means that ads for the Omnibus are due at the same time. Resource Section submissions are due by the same time. Getting the Omnibus out in January helps everyone.

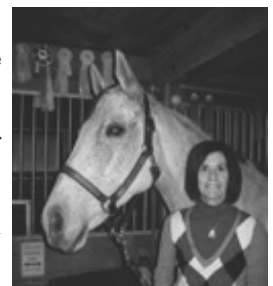
AWARDS

You **MUST** send in all of your information by **November 5** to qualify for year-end awards. Please don't be disappointed if you find out you missed the deadline and cannot receive the award you hoped you had earned. Part of earning it is filing the paperwork by the deadline.

We are going to hold true to these deadlines, so please make sure you honor them. We do not want you to miss them and be disappointed.

This all may sound tedious and too strict, but you have to remember that first, we listen to your suggestions, and second, we have volunteers who work very hard to process all of this paperwork, whether it be your membership dues, your awards, or your registered shows. It is not fair to your fellow members who are working hard for all of us with little reward just because they care about our organization to have their efforts made more difficult. We know that once the deadlines are in place for a while, we will all find it second nature to easily adhere to them.

I hope you all will have a wonderful New Year with your horses, and enjoy the wonderful programs and shows we are already planning for you in 2012. With your help, we can make our GMO one of the best!



Susan and Chevy

AMY HOWARD DRESSAGE, LLC



FEI Competitor and Trainer
Clinics, Lessons, Showing, Sales

Now Offering Special Fall Introductory Training Packages

Please call for details 908-310-9384
Sergeantsville, New Jersey
ashoward@hotmail.com
www.AmyHowardDressage.com

ESDCTA Statement of Purpose

Eastern States Dressage and Combined Training Association (ESDCTA) was founded in June 1969 and incorporated in 1970 as a non-profit educational organization under the laws of the State of New Jersey. ESDCTA with membership open to all interested in dressage and combined training, has the following stated purpose: "*Whereas it is the desire among many equestrians in the United States to foster and stimulate interest in dressage and eventing in the hope that this may ultimately benefit the United States Olympic Team in its international competition, this organization is established as a non-profit educational organization.*" Its further purposes are to foster and stimulate interest in dressage and eventing in general, to educate, conduct clinics and hold dressage shows and combined training events.

Know of someone who has lent that helping hand at a horse show, even to a competitor? Perhaps you know someone in your barn that always offers to help when the farrier or vet comes or who lends the fly spray when you run out just before a lesson?

If he or she is an ESDCTA member, nominate them for

THE GOOD SPORTSMANSHIP AWARD

Send in an essay on why they should receive this award:

Email newsletter@esdcta.org

**Let us say thank you to your nominee for being
a good role model for our organization!**

CROSS COUNTRY...

News Across Our Region

COMMUNITY NEWS

Check out the ESDCTA website for horse show updates, information about clinics, educational opportunities, and news about your Club, dressage, and eventing.

Don't forget to fill out the Large Animal Facilities Survey if your farm could serve as a shelter in case of emergency, such as a flood, fire, blizzard, or hurricane. The form is available on the ESDCTA website and at www.nj.gov/agriculture/divisions/ah/pdf/largeanimalfacilitiesurvey.doc.

COMMUNITY CALENDAR

JJ Tate lecture—November 5, 2011; 7:30pm.
Sponsored by the LVDA. Free and open to everyone.

Turkey Trot—November 20, 2011; 9:30am-2:00pm,
rain or shine. Riders and drivers welcome. Short course or long course available for both riders and drivers. Riders must be in pairs.

There are still shows through November!

ESDCTA welcomes proposals
from vendors for goods and services .
Please contact the appropriate committee .

UPCOMING MEETINGS

Nov. 9—Board of Trustees, 7:15 pm
The Metro Diner, Rt. 31/202 N, Ringoes, NJ.
Contact: Susan Lax, 609-466-4178

TBA—Eventing Committee Meeting. Contact Gary Maholic at gmaholic@gmail.com for more information.

MEMBERSHIP QUESTIONS

For membership questions including updating physical or e-mail addresses please contact:
Diane Engler

PO Box 185, Pipersville, PA 18947
kaboomer@epix.net
610-730-0371 before 9 pm

NEWSLETTER COMMITTEE

Meredith Rogers, Diane Engler, Megan Zureck &
Susan RG Lax

E-mail: newsletter@esdcta.org

All submissions are due by the 10th of the month

Due to space considerations, the editors reserve the right to edit submitted articles. If possible, the articles will be returned for review of the editing.

Send your Cross Country Information to

newsletter@esdcta.org

2011 ADVERTISING RATES

| | MEMBERS | NON-MEMBER |
|--------------------------------------------------------------|---------|------------|
| FULL PAGE | \$100 | \$130 |
| HALF PAGE | \$65 | \$85 |
| QUARTER PAGE | \$40 | \$60 |
| (for above you will get a 10% discount for 3 or more months) | | |
| BUSINESS CARD | \$20 | \$30 |
| CARD FOR 3 MONTHS | \$45 | \$65 |
| CLASSIFIEDS | \$10 | \$15 |
| (per 35 words) | | |

Deadline: 15th of Prior Month

Email: newsletter@esdcta.org
Please have electronic ads in Adobe or .jpg format

You will receive an invoice for your ad via email.

Time for Year End Awards!

The show season is almost over and it's time to start getting scores and volunteer hours together for 2011 Year-End Awards. Show season started on November 11, 2010, and will end on October 31, 2011. Keep in mind:

High Score Awards: there are new requirements for 2011!

Starter W/T and W/T/C: 5 scores / 4 different judges / 3 different shows

Training-Fourth: 5 scores=3 from the highest test of the level from 3 different judges / 4 different judges overall / 3 different shows

Designations: *Dressage:* Junior / Amateur / Open;
Eventing: Junior / Senior

Master Recognition Awards: Qualifying age is 50 years, open only to Adult Amateurs in both Dressage and Eventing. This is *not* a "Stand Alone Award" but an additional award for High Score Awards submissions.

Starter Rider: The day a rider competes at Training Level, Test 2 or above they are *no longer* a starter rider. Scores prior to that day may be used towards Starter Rider Year-End Awards.

Championship Show/Classes: Scores earned in Championship classes or Championship shows sanctioned by ESDCTA may be used for Year-End Awards. If two tests were ridden and then combined to achieve a final score, only the final score may be used. If a test was ridden under two judges and the scores were averaged, only the final score may be used. However, both judge's names may be used to satisfy the judge requirement.

General Awards: Nominations – please refer to the Omnibus for full details.

Tests: Please save all of your tests. Do not send the original tests! No email or fax entries accepted. Award entries must be complete with copies of tests attached to each entry. In the case of lost tests, please use USEA or USDF print-outs or have the show secretary write a confirmation letter.

Volunteer Hours: 8 hours of volunteer time is required for each award – except for Master Recognition Award.

Membership: Applicant must have been a member in good standing at the time scores were earned and when applying for an award.

November 5 is the deadline for Year-End Award submissions. They must be complete and **post-marked** no later than this date. No late entries will be accepted.

Awards will be presented at the annual ESDCTA Year-End Awards Banquet. Please refer to the omnibus for full details about each award category. Any questions can be sent via email to awards@esdcta.com.

Good luck at Championships and continued success in the remainder of the 2011 show season!

Melissa Pribic, Awards Chairperson

awards@esdcta.org

CENTERLINE

Dressage News

By Beth Ann Adams

The Inside & Outside of the 2011 ESDCTA Championships

This year's Championships brought new challenges and accomplishments for all of the staff involved. My husband, Keith, and I became mentors for Dr. Lisa Toaldo, as she took on the job of Show Secretary. Our first unexpected difficulty was discovering that the Fox Village software was not compatible with certain systems. We had to devise a way to manipulate the software so it would communicate successfully between both of our computers. Then we embarked on the nitty gritty of inputting data. Lisa and I spent many hours together working towards meeting each competitor's needs. It was a learning experience for the three of us. Another new experience for me was to be Stabling Steward and assign stalls for each horse. Keith had the behind-the-scenes job of setting up the ride schedule. He takes on this task each year and does a fabulous job. Terry Masters' job as show manager involves months of preparation. Carol Conner added her expertise as Head Scorer. The weather was perfect; the horses were gleaming as the competitors anxiously waited to hear the whistle marking their turn to wow the judges. Here are some comments from others involved with 2011 Championships:

Debby Savage

Judge @ C Rings 1 and 2

It was an honor to be President of the Ground Jury at this show, as it has become such a mainstay of the Dressage community with 5 full rings! Terry Masters and the Club do an incredible job of making it very special and it outdoes many Recognized shows in our area. It is a wonderful opportunity for riders to compete against their peers due to the way the different divisions are set up. I was impressed by the overall caliber and quality of the competitors.

Susan Lax

ESDCTA President

Runner - Ring 1

To be part of the excitement of this show as a volunteer is always a wonderful experience. But my greatest pleasure as President is being able to congratulate first-time champions.. It is inspirational!

Jessica Kuc

Competitor

As always, it was a pleasure to compete at the ESDCTA Dressage Championships. I rode two horses in two divisions: the Musical Freestyle Championships and the Training Level Above Second Division. The scheduling could not have been more perfect, allowing me plenty of time to switch horses. We were lucky to have a gorgeous day and the Horse Park is a beautiful venue in which to compete. The management, organizers, and volunteers were very helpful and made the show run smoothly. Throughout the day there never seemed to be any major bumps in the road, which is extremely impressive for a 5-ring show! Overall, from the quality of the prizes and condition of the venue to the helpful volunteers and impeccable organization, the ESDCTA Championships was a fantastic event to be part of. Thank you to everyone involved for a fun, successful day!

Nancy Rowbotham

Volunteer

Awards Table

My experience handing out tests was a good one. All of the competitors were patient and professional. They were coming for tests sheets as the ribbons were handed out in the Awards Ceremonies and they were all very gracious. Standing in line for their sheets was actually an opportunity for social interaction for the competitors. Plus I saw riders I knew and was able to congratulate them.

Lisa Mauriello

Volunteer

Ring Steward Rings 3 & 4

The weekend was a long one. My Mom was the show secretary, so we had to be there Saturday. The day was cold and we had to check people in outside of Barn B because there was another show going on and could not use the office. Sunday came so fast, and before I knew it I was waking up early in the morning getting ready for a big day. It was a long and interesting day. My job was to be Ring Steward for Ring 3. The day started and went very well. I learned a lot and think the riders liked me as a Steward. Things went smoothly until after lunch. The judge was ready to judge but there was no scribe, so we had a little problem. Then the worst thing happened. The judge asked me to scribe. My answer was "I m only 12 years old. I don't know how to scribe." The Judge was very nice and said she would show me how. So I went into the judge's box and scribed the first test, which was Intro so it wasn't too bad. After that test I wanted to stay because I thought it was so much fun, but the scribe came and life was back to normal. I had a lot of fun that day and learned a lot. That's the great part of being a volunteer, you never leave empty handed, and you always learn something.

Continued on next page

Nancy Krial***Competitor***

This past September, my horse, Phyler, and I qualified at Third Level to ride in the ESDCTA Championships at the Horse Park of New Jersey. We started riding Third Level last year but I hadn't ridden Third 3 so we didn't show at the Championships in 2010. The tests were all new this year, which was more of a challenge, but we met my goal of qualifying and came to the show on September 18. I was accompanied by my non-horsey husband, Jeff. I was hoping to place in the ribbons and we did! Phyler earned a 5th place ribbon – she looked so pretty in pink. Jeff thought we did great for a retired schoolteacher who's also an Amateur. I received some insightful feedback from the two judges I rode under: Debbie Savage and Elsie Kellerman. We have many things to work on over the winter. The HPNJ show grounds were well groomed and I found the ring footing excellent. The show was well run and everybody was friendly and helpful. We definitely are setting our sights on higher scores for 2012. I have to say that it is a thrill to canter past the Grandstand in the Victory lap as the "Rocky" music plays. I still find that theme inspiring!

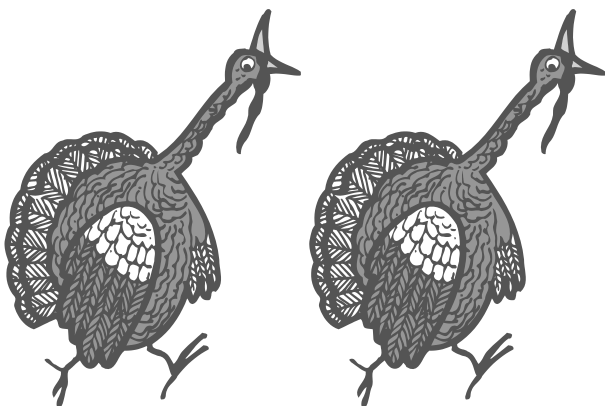
Terry Masters***Show Manager***

As our ESDCTA Championships approaches each year, I worry that we'll never be able to repeat the success of the prior year's show. Of course, as soon as the show is underway I wonder why I was concerned. Not only did we reach our typical high number of entries but also the spectrum of Club members who entered has expanded. We now have more junior members participating and it's wonderful to witness how serious they are about Dressage. I particularly enjoy seeing how the children have grown along with their riding skills maturing. Our Club is in good hands with this young crop of equestrians.

Equally important is the continued support of both the adult amateurs and professional competitors of our membership. It's a credit to ESDCTA to have so many pros and upper-level open riders supporting our show. Each year demonstrates the growth in the quality of both the horses and the riders. Our Championships maintains a welcoming atmosphere for all competitors and their horses. We support and congratulate each other's accomplishments and cheer for everyone in the Winners' circle. What a wonderful change that is from the competitive environment of so many other shows.

We would not have this level of success if it were not for the unselfish commitment of our members who volunteer their time and dedication to the Championships. They are working long before any competitor arrives at the show grounds to organize the event, setup the rings, and decorate the pavilion. On show day they cheerfully fulfill the myriad of duties, and many stay for cleanup, not leaving the show grounds till long after the last horse has been loaded for home. It is with heartfelt gratitude that I thank all of you for your generous support and hard work. You are what "make it happen."

Thank you Ann Schneider, Debbie DelGiorno, Howard and Susan Lax, Lisa Mauriello, Donna King, Kathy Mueller, Lynette McMoran, Nancy Frenick, Jan Kalafat, Ayushi Bhatt, Barbara Iaasc, Laurie Miller, Pat Stave, Molly Moon, Elaine Landy, Erin Hamer, Viktoria Shilton, Nancy Rowbotham, Jean Gortz, Maureen Foley, Adele Hearn, Marianne Hopko, Madeline and Tom Griffin, Dennis and Terry Reese, and the Dressage Competitions Committee members, Lisa Toaldo, Carol Conner, Beth Ann and Keith Adams, and Dawn Cozzolino.



Come to the... Come to the Come to the ...



614 Schwenkmill Road
Perkasie, PA 18944

*First Class Boarding Facility with Excellent Amenities
Personalized and Professional Care
Indoor & Outdoor Arenas • Outside Trainers Welcome*

Tanya Milner Logan
Owner

Tel: (215) 453 7960
Cell: (215) 837 3530
fourstarstablesllc@yahoo.com

CHAMPIONSHIP NERVES

By Allison Bierly

My name is Allison Bierly and I am 8 years old. This weekend, Sept. 18, 2011, I got to ride in the ESDCTA Dressage Championships at Horse Park of NJ. I was riding Mon Ami, a 25-year-old horse that is a quarter horse and a palomino. He broke his hip several years ago and my trainer, Kathy Adams, worked hard to make him better; without her, he wouldn't have made it.

Now, the reason that I made it to the Championships is that I worked hard with Kathy to be able to go to my first show at The Meadow in August. I couldn't believe my eyes when I saw my mom walking to the trailer with a red ribbon! When she told me I had qualified for the Championships, I was so excited! Of course, it was only my first show, so I went to The Meadow again at the beginning of September. I got a first and second place and my scores were a little better than my first show. I felt ready.

Then, it was time for the Championships. The day before, I braided Mon Ami, bathed him, brushed out his tail, and of course, practiced my riding. The next morning, I got up very early because my brother also qualified and he had to ride earlier than me. I wrapped Mon Ami's legs and loaded him up on the trailer.

We got to the Horse Park, and since he's older and we were going to be there for a long time because my friends' and brother's times were so different, we got Mon Ami a stall. All of Kathy's students got stalls and I went down to get them ready. We brought the horses down and settled them in. I fixed a few braids and kept Mon Ami company for a while.

A long time after that, I got ready to ride. I got on and warmed him up. Corrie, my first instructor, helped me because we had so many riders at the championships. Kathy was getting someone else ready. Then I went around the ring and when the whistle blew I entered at a trot and did my test. The whole time I said "I'm not nervous. I'm not nervous," but when I got there I was shaking. I had practiced in a large and small arena. For the last week, though, I only practiced in a small arena. But when I went in, it was big! I messed up the test but then I got it back and really tried to ride well.

For my second test, Kathy helped me warm up. We were doing a pretty good job. When I went into the arena I did it again! My nerves hit and I forgot to walk. The judge told me where to start again, and then I was okay and finished the test. I felt a little down that I messed up but then I figured I really tried, so I knew I did the best I could and finished pretty well.

After all that, I took care of Mon Ami and then went to clean up the stabling. While I was there, I heard the announcement for Intro Walk/Trot riders to come to the awards ring. I heard *my* name and number! My friends all helped me get ready and get Mon Ami tacked back up fast. When I got down to the ring, the lady put a sash around Mon Ami's neck. I was so excited to get 6th place, but then my mom explained that they decided to separate juniors and seniors and that I had *won* the junior Intro. Walk/trot !!! *I couldn't believe it!*

Kathy explained what I needed to do. A lady helped me at the gate and they took a picture of Mon Ami and I. I was so proud of him. Then we all lined up for a picture. Then, I got to lead the other two girls in trotting around the ring. I came out with a big smile. I got off and kissed and patted Mon Ami. I was so happy with him. After that, we got ready and took him home where he got to eat and then go out to play for the night. When I got home, I fell right to sleep and dreamt about my wonderful day.

I couldn't have done it without my family and friends, and Corrie Makin for teaching me all my first skills, and especially my trainer, Kathy Adams and her amazing horse, Mon Ami.

LVDA and The Dressage Foundation Present a Free Lecture

Jessica Jo Tate

Aids For The Lateral Dressage Movements

Come hear Jessica Jo Tate discuss the aids for such lateral Dressage movements including shoulder fore, shoulder-in, haunches-in (travers), haunches-out (renvers), walk pirouette and canter pirouette.

Saturday, November 5th, 7:30 p.m.

Comfort Inn, Rt. 100, north of Rt. 78

The lecture is free and open to everyone. Free refreshments.

FOALIN' AROUND

Youth News, Activities, and Opportunities

Everyone, it seems, has been very busy finishing up their show year, and although we are just saying goodbye to competition season 2011, the youth committee is already looking towards next year— which actually starts November 1, 2011.

First, we'll begin with the last two "projects" we finished the season with: Cindy Roesener hosted the last of our series of three Fix-a-Test Clinics at Beaver Creek Farm in Ringoes, NJ, on Oct. 9. Lisa Schmidt (R) was the featured clinician/judge. Most of the riders rode "moving up" tests, getting ready for next season. Lisa taught with enthusiasm and gave keen insight to everyone on how to best present their horses at their new levels. A HUGE thank you to Lisa for filling in (and donating your time) as clinician at the last minute! And we wish a quick recovery to the originally scheduled clinician, Ann Forer, who underwent knee surgery. Thank you, Cindy and Beaver Creek Farm for hosting the breakfast and clinic.

We sponsored our last rider of the season, Emilie Rucci and "I Spy a Rainbow" for the USPC NJ Region Starter Trials. Emilie and her homebred "Rainbow," were First in the Starter Division. She was tied for 2nd after dressage (29.5) and moved up to first after a clean show jumping and clean cross country round finishing on her dressage score! Congratulations Emilie. Next year we would like to sponsor two full teams for this great event.

Now information for next year....

We would like to have a youth, 15-19 years old, represent the ESDCTA in New Jersey's Annual "Equestrian of the Year" contest. If you are interested, please go to the "Activities" page on **ESDCTA.org** and you will find all of the information. The deadline for applying is November 4, 2011.

And speaking of the future:

The deadline for dressage team applications for the Lendon Gray Youth Festival and the USDF Region 1 Youth Team Competition are both very early in the show season. Scores and volunteer hours may be earned NOW. Make sure your membership is renewed if you are going to use scores from November and December. You must be a member at the time scores are earned! (The ESDCTA membership year runs from Nov. 1, 2011 to Oct. 31, 2012.)

Eventing team applications are usually due later in the season (August this past year), but read the requirements carefully. Scores and volunteer hours earned now can be used for your 2012 event team application. During 2012, we will be sending a team of riders to a USEF/USEA team event and will field two teams for the USPC Starter Horse Trials at the NJHP. Remember if you are a team member, ESDCTA pays your entry fee, stabling for away competitions, and you get to work with a team of other riders and have a great time. Detailed information can be found on the ESDCTA website under "Activities" and in the ESDCTA Omnibus.



Kylie Dickinson on Ishtar and Lisa Schmidt

We are also looking for items/donations to raffle off at the annual ESDCTA awards dinner. Please contact Jill Kuc if you would like to help the youth committee fund the great programs we offer (and maybe we can offer more)! Thank you in advance for your support.

We are looking forward to a great season 2011-2012! If you have any questions or comments about any of the programs, feel free to contact Jill, Cindy, or Heidi, ESDCTA Youth Co-chairs. Contact information is in the newsletter or on the website.

It's Omnibus Time Again!!!

Organizer's Meeting for the 2012 Omnibus and Calendar of Registered Shows for 2012 will be November 8, 2011.

Cathy Brogan, Editor of ESDCTA's 2012 Omnibus, will hold the Annual Meeting for Organizers to set up the calendar for registered ESDCTA shows on Tuesday, November 8, 2011. The location will be the same as last year: the conference room at the Days Inn, 1260 Route 22 East, Bridgewater, NJ.

All show organizers should plan to attend this meeting. Shows that currently hold ESDCTA registered shows have first claim on those dates for their shows for 2012. Prior to that meeting, all organizers will receive a copy of this year's prize list page(s) and are asked to update those pages with information for 2012. If the organizer is unable to attend, we ask that they notify Cathy Brogan, and forward their information for their 2012 shows prior to the November 8 meeting. This will insure that the calendar lists all shows for 2012.

If a new organizer wishes to add a new show and/or a new location for a show for 2012, please contact Cathy Brogan for more details on how to do this.

Members – Would You Like to Be on the Cover of Our 2012 Omnibus? We Are Looking for Omnibus Cover Pictures for Next Year's Book

For the past few years we have featured pictures of our members and their horses on the cover of our Omnibus. Additionally, we have included as many pictures as possible inside our Omnibus out of those that were sent to us to be considered for the cover. We know that only one picture can be on the cover, but with so many really nice photos arriving in our email, we want to include as many as possible of them in our ESDCTA Omnibus because this is your organization and it belongs to you, its members. So if you have a picture that you would like to be considered for the cover of the 2012 Omnibus or would like to have included inside the book, please send them to the Editor, Cathy Brogan, at Omnibus@esdcta.org, or mail them to her address: 176 Barbertown Idell Road, Frenchtown, NJ 08825.

Thank you for helping again this year.

Cost for Advertising in the 2012 Omnibus

Advertisers who might be interested in purchasing advertising space for next year should contact the Omnibus Chair, Cathy Brogan, with any questions about this topic. Most advertising rates will remain the same as last year, which are as follows:

- \$85 for a ¼-page B&W
- \$135 for a ½-page B&W
- \$200 for a full-page B&W
- \$175 for a ½-page color ad inside the book (new size available)
- \$300 for a full-page color ad inside the book (slight increase of \$25)
- \$400 for the inside of the front or back cover in color
- \$550 for the outside of the back cover in color

Those advertisers who also place ads in our Newsletter, receive a 10% discount on all ads. We urge advertisers to reserve their desired space as soon as possible.

Deadline for advertising is December 31, 2011.

Equine Resource Section for 2012 Omnibus

The "Equine Resources" section is a compilation of businesses, services, boarding facilities, trainers, etc., that serve our members in many capacities. If you wish your business, service, facility, etc., listed, please use the form on the next page to send us your information. The cost to do this is \$25 per listing. The objective is to provide our members with a convenient source to find services and for businesses who provide them with a place to be listed at a reasonable cost. We hope that this section will grow each year and be helpful both to our members and to businesses.



Equine Resource Listing for ESDCTA's 2012 OMNIBUS:

Mail completed form and a check in the amount of \$25.00 for each ad. Check should be payable to ESDCTA.

Send to: ESDCTA Omnibus • c/o Cathy Brogan, Editor
 176 Barbertown Idell Road • Frenchtown, NJ 08825
 email: cathybrogan@earthlink.net

The following information should be included in that listing and the fee for each listing will be \$25.00.

I would like my business/service/etc. to be listed as an Equine Resource under the following heading:

Name for Listing: _____

Contact Person: _____

Address: _____

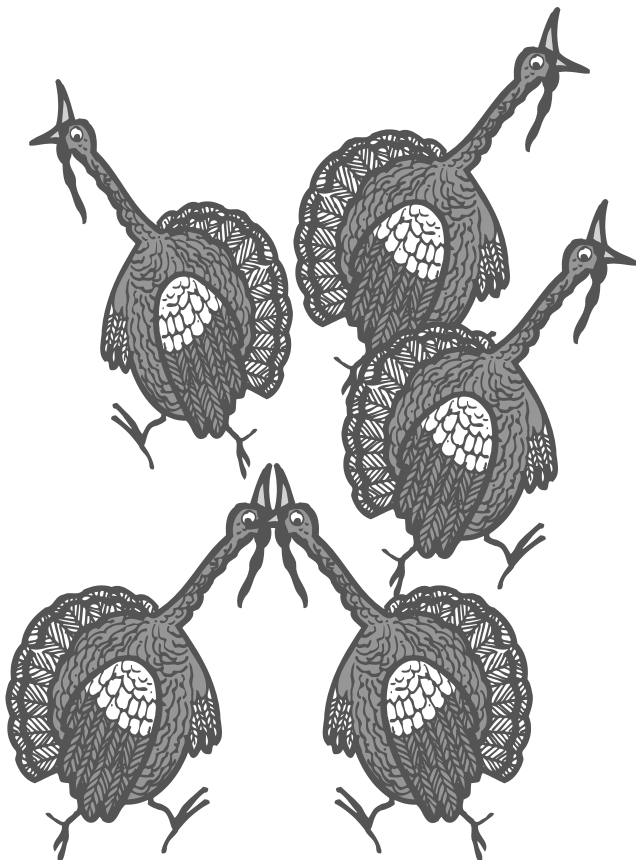
City, State, Zip: _____

Phone & Fax: _____

Email: _____

Website: _____

Message: _____



Which way do we go, George, which way do we go?

HIGH HOPES STABLES

in beautiful Hunterdon County

Now offering:

Full time dressage training with USDF bronze & silver medalist

~

Large stalls available with automatic water

~

Mirrored indoor with new base and footing

~

Heated lounge & bathrooms

~

Heated wash stalls & tack room

~

Large outdoor ring with watering system & round pen

~

Beautiful turnouts & miles of scenic trails
 Full time experienced staff on premises

highhopesstable.com
908.283.4054

**The Dressage Foundation Presents a
USDF/ESDCTA CONTINUING
EDUCATION SEMINAR AND “L”
BRUSHUP**



**A Weekend with *Linda Zang*, FEI
Olympic 5 Star Dressage Judge**

Linda Zang of Idlewilde Farm in Davidsonville, Maryland, has represented the United States as a dressage competitor at the 1978 World Championships, the 1979 Pan-American Games and the 1980 Alternate Olympics at Goodwood, England. She has been an FEI judge since 1985 and judged the dressage event at the 1996 Olympic Games in Atlanta.

**Saturday December 3, 2011 -- Continuing Education RIDING CLINIC for
Dressage Judges and L Graduates**

9:00AM to 4:PM

Backbrook Farm, 75 Backbrook Road, Ringoes New Jersey

(Facility donated by Stephan and Caroline Cheret)

\$200 for a private session

Auditors welcome (\$20 for ESDCTA members, \$30 for non members) Open to all.

Please bring your own chair

Contact kembarbosa@aol.com to reserve a ride time

Sunday December 4, 2011 -- MUSICAL FREESTYLE SEMINAR

9:00AM to 2:30 PM

At the USET Library -- 1040 Pottersville Road, Gladstone, NJ 07934

Information on designing, riding and judging freestyles

Counts towards USDF University Credit

OPEN TO ALL Trainers, riders, spectators, judges and L graduates

\$35 for ESDCTA members/\$45 for non members (includes lunch)

For reservations, send a check before 11/15/2011 payable to ESDCTA, Inc. to:

Kem Barbosa

282 Carter Road

Princeton, NJ 08540

please include a telephone contact number

SALUTE

Michelle Hauser



Michelle has been a member of ESDCTA for years and has volunteered on the Youth Committee for the past year. A resident of Hillsborough, she works as a Guidance Counselor at Franklin High School in Somerset, NJ. And while it is obvious she loves kids, her passion is, you guessed it, horses.

Her Thoroughbred, Mexican General, would tell you that she is one crazy horse lover, but he would not be able to tell you that if she had not saved him from what could have been a fatal injury. Now she just dotes endlessly on the retired gelding, soon to star in a calendar she is publishing for friends and family. Michelle shows up every day at the farm where General is boarded, grooming him, re-teaching ground manners when necessary, and just having those conversations that only horse and owner find special.

Despite “Gen” being retired, Michelle has continued to ride and show. “If I had to use one word to sum up my riding career it would be perseverance,” Michelle said. “I have had a lot of obstacles in my way, but I just keep at it.”

Michelle started riding in 1995 when she was in 12. “I had been begging my parents for years to let me ride and finally got four lessons for my birthday and four lessons for Christmas. I loved it so much that I begged my parents to keep them up. The first place I rode at was Diana Russo's and she only had lessons from April–November.”

Joining the Amwell Valley Hounds Pony Club in 1998, Michelle and her parents quickly learned that you need a horse to be in pony club. She leased her first horse but it was still difficult without the other accoutrements like a trailer so, after a few years and participating in only one or two events a year, she dropped out.

In 2001, Michelle went to college at the University of Connecticut and planned to ride hunt seat, but after taking a dressage lesson, fell in love with that, as well. She was a co-founder of the UConn Dressage team and rode with the Intercollegiate Dressage Association.

When home on breaks from college, Michelle rode Amy Nemeth's horse, My True Heart. But when she graduated from college, “Tess” was leased to someone else. In 2005, Amy introduced Michelle to Gen. They were able to show in 2006, the same year that Michelle earned her therapeutic riding certification from Centenary College, and before Gen got hurt a year later.

Despite not being able to continue showing on the love of her life, Michelle keeps plugging away, never letting small or large defeats get in her way. She first leased “Lexi,” then Phoenix, Archie, and now Lucky Lady. We wish her much success with her new mount and many more years with her beloved, General.



Michelle with General

THE START BOX

EVENTING NEWS

Come one, come all to...

The Turkey Trot!



Sunday, November 20, 2011

at the

Horse Park of New Jersey

This fall "ride" and "drive" is similar to a hunter pace, but it's done at a slower, "pleasure" pace. It's a fun wind down to finish the season with a great hack through the Assunpink Wildlife Preserve which is adjacent to the Horse Park.

There are many divisions to choose from for the riders; Senior, Junior, Family, and Open (rider divisions). The course is ridden in pairs (drivers can drive pairs, but only one award per carriage). The team in each division that comes closest to the "mystery" pace, gets a prize and there are ribbons through 8th place.

It's also a great volunteer opportunity for those that need more hours! We look forward to seeing you there!

email Gary Maholic — gmaholic@gmail.com — for more information

~~~~~

The Eventing Committee meets monthly and is interested in your input for shows, schoolings, etc, in 2012

# SHOW RESULTS

|                                                                                            |                                           |                                                        |                                         |                                           |  |  |
|--------------------------------------------------------------------------------------------|-------------------------------------------|--------------------------------------------------------|-----------------------------------------|-------------------------------------------|--|--|
| <b>DRESSAGE AT STONE TAVERN</b><br>9/2-4/11<br>Judges: Savage (S), Schmidt (R) & Lewis (S) |                                           |                                                        | C. Korus Goldbaron 65.641               | K. Taler JR 60.625                        |  |  |
| <b>TRAINING – 1 – O</b>                                                                    |                                           |                                                        | <b>USDF – A – STARTER HORSE – J</b>     |                                           |  |  |
| J. Coleman Fhrelancer 73.750                                                               | <b>FOURTH – 1 – O</b>                     |                                                        | J. Allison Warren Double Diamond 61.250 | <b>USDF – A – STARTER HORSE – S</b>       |  |  |
| A. Beffel Beaujoulais 64.167                                                               | L. Basselini-Thompson Prince 66.571       | J. Steiner Remington 66.000                            | D. Pharo Red Sugar Candy 70.000         | K. Divito Majestic Lady 69.375            |  |  |
| A. Bean Quick Reflection 62.500                                                            | M. Oyson Chonchita 64.000                 | R. Munroe Tiramisu 59.143                              | M. Evangelisti Princess Ghanima 61.875  | <b>USDF – B – STARTER HORSE – J</b>       |  |  |
| A. Bean Quick Reflection 60.000                                                            | <b>FOURTH – 2 – O/BLM</b>                 |                                                        | A. Shiffer Wexford 65.625               | N. Pagliuso Classical Debut 62.500        |  |  |
| <b>TRAINING – 2 – O/BLM</b>                                                                |                                           |                                                        | <b>USDF – B – STARTER HORSE – S</b>     |                                           |  |  |
| R. Mouras Winsome Chauffeur 75.000                                                         | B. Hay Fitzhessen 65.676                  | S. Zugel Truman 64.865                                 | J. Allison Warren Double Diamond 60.625 | K. Divito Majestic Lady 67.500            |  |  |
| P. Care Lhukas 72.857                                                                      | H. Lemack Depardieu 64.324                | J. Steiner Remington 63.784                            | D. Pharo Red Sugar Candy 65.000         | E. Brindle-Clark Cycloptic Dilemma 64.375 |  |  |
| L. Basselini-Thompson 71.429                                                               | <b>PRIX ST. GEORGES – O/BLM/GAIG</b>      |                                                        | M. Evangelisti Princess Ghanima 63.125  | <b>USDF – C – STARTER RIDER – S</b>       |  |  |
| Rhapsody von Star Cross                                                                    | C. Cheret Fioretto 71.316                 | S. Rembacz Embassy III 70.526                          | K. Taler JR 61.000                      | <b>USDF – C – STARTER HORSE – J</b>       |  |  |
| P. Care Lhukas 70.714                                                                      | M. Oyson Conchita 68.684                  | C. Cheret Sandokan 68.421                              | A. Shiffer Wexford 63.500               | N. Pagliuso Classical Debut 59.500        |  |  |
| <b>TRAINING – 3 – O/GAIG</b>                                                               |                                           |                                                        | <b>TRAINING – 1 – O – S</b>             |                                           |  |  |
| S. Rembacz Xander C 74.400                                                                 | <b>INTERMEDIAIRE – I – O/BLM/GAIG</b>     |                                                        | K. Sakevich Wistful 58.750              | <b>TRAINING – 2 – J</b>                   |  |  |
| S. Rembacz Xander C 74.000                                                                 | B. Neidhardt-Clark Vodina 67.895          | C. Cheret Sandokan 67.632                              | J. Bacha Rust to Riches 67.500          | G. Muirphy Que the Villain 65.000         |  |  |
| P. Devoe-Moore Windsong FV 73.200                                                          | C. Cheret Sandokan 67.632                 | P. Keller Pentagon 67.632                              | S. Tucci Conclusive Bad Boy 63.929      | M. Aliseo Fusion's Sonny Bliss 62.857     |  |  |
| P. Care Lhukas 71.600                                                                      | A. Meyer Donna Nikolina 65.263            | <b>INTERMEDIAIRE – II – O/BLM/GAIG</b>                 |                                         | <b>TRAINING – 2 – S</b>                   |  |  |
| <b>FIRST – 1 – O</b>                                                                       |                                           |                                                        | L. Lewis-Greene Picasso's Bleu 63.158   | S. Simon Patchamo 63.929                  |  |  |
| M. Lufkin Azrael 70.000                                                                    | <b>GRAND PRIX – O/BLM/GAIG</b>            |                                                        | B. Wolfe Lucien 62.340                  | K. Sakevich Wistful 60.714                |  |  |
| K. Poole AB Sunset Hunter 67.241                                                           | <b>MFS – FIRST LEVEL – O/BLM/GAIG</b>     |                                                        | <b>TRAINING – 3 – J</b>                 |                                           |  |  |
| J. Hyde Drachenfeuer 64.828                                                                | M. Payne Shantiana 72.333                 | <b>MFS – THIRD LEVEL – O/BLM/GAIG</b>                  |                                         | J. Bacha Rust to Riches 71.600            |  |  |
| B. Albright Karat HCW 64.483                                                               | M. Payne Dario 71.167                     | <b>FEI – 4 YO</b>                                      |                                         | G. Murphty Que the Villain 69.600         |  |  |
| <b>FIRST – 2 – O/BLM</b>                                                                   |                                           |                                                        | M. Payne Dario 64.233                   | D. Rankow Djinn 68.000                    |  |  |
| J. Coleman Fhrelancer 70.541                                                               | <b>FEI – 5 YO</b>                         |                                                        | G. Armando Free Rein 8.140              | D. Bierly Cadenza Aria 66.800             |  |  |
| C. Goldstein Scho Girl 67.568                                                              | G. Armando Free Rein 7.880                | S. Hirosh Classy Sinclair 7.880                        | <b>TRAINING – S</b>                     |                                           |  |  |
| J. French SomeGinSomewhere 67.297                                                          | G. Armando Free Rein 7.480                | G. Armando Free Rein 7.440                             | C. Montgomery Kenzo 69.200              | N. Thompson Achieva 68.800                |  |  |
| M. Lufkin Azrael 66.757                                                                    | <b>FEI – 5 YO</b>                         |                                                        | J. Harper Epic's Dream 62.800           | J. Harper Epic's Dream 62.800             |  |  |
| <b>FIRST – 3 – O/GAIG</b>                                                                  |                                           |                                                        | S. Simon Patchamo 59.200                | K. Sakevich Wistful 57.200                |  |  |
| M. Payne Shantiana 71.290                                                                  | M. Detering Rarity 7.720                  | M. Detering Rarity 7.700                               | <b>FIRST – 1 – J</b>                    |                                           |  |  |
| M. Dujardin Magnificent Fool 70.000                                                        | J. Hyde Drachenfeuer 7.280                | J. French SomeGinSomewhere 7.160                       | D. Rankow Djinn 66.897                  | D. Bierly Cadenza Aria 65.517             |  |  |
| M. Detering Rarity 68.065                                                                  | <b>BRENTINA CUP *</b>                     |                                                        | T. Mandrona Fit to Be Tyed 61.724       | K. Mertens Boomer 52.759                  |  |  |
| K. Poole AB Sunset Hunter 67.742                                                           | Kl Kohman Agastrofos 68.974               | K. Kohman Agastrofos 66.410                            | <b>FIRST – 1 – S</b>                    |                                           |  |  |
| <b>SECOND – 1 – O</b>                                                                      |                                           |                                                        | <b>TRAINING - S</b>                     |                                           |  |  |
| J. Brumfield Hugh Knows 67.714                                                             | <b>YR INDIVIDUAL TEST</b>                 |                                                        | C. Montgomery Kenzo 69.655              | N. Thompson Achieva 64.828                |  |  |
| R. Cristo One Night Stand 66.000                                                           | B. Albright Iranos Rex 55.263             | B. Albright Iranos Rex 50.263                          | J. Harper Epic's Dream 60.000           | <b>FIRST – 2 – J</b>                      |  |  |
| S. Hirosh Aragon 65.714                                                                    | <b>PONY CLUB TEAM TEST *</b>              |                                                        | T. Mandrona Fit to Be Tyed 65.946       | K. Mertens Boomer 59.189                  |  |  |
| M. Lufkin Azrael 63.714                                                                    | B. Davis Poldy 10 63.056                  | <b>DRESSAGE AT THE MEADOW</b><br>9/3/11 Judge: Kuc (L) |                                         |                                           |  |  |
| <b>SECOND – 2 – O/BLM</b>                                                                  |                                           |                                                        | <b>FIRST – 2 – S</b>                    |                                           |  |  |
| M. Detering Rarity 67.895                                                                  | <b>USDF – A – STARTER RIDER – J</b>       |                                                        | C. Montgomery Kenzo 59.459              | <b>FIRST – 3 – S</b>                      |  |  |
| B. Halka Florina 63.158                                                                    | B. Wamer Son of a Bull 64.375             | A. Bierly Mon Ami 64.375                               | T. Wilson Denali 65.161                 | G. Bott Koraal 61.935                     |  |  |
| K. Kruemmling Dahlia 62.368                                                                | J. Brindle-Clark Cycloptic Dilemma 63.750 | S. Ceylan Cudjo 61.875                                 | <b>SECOND – 2 &amp; 3 – S</b>           |                                           |  |  |
| K. Hechler Tarantella 62.105                                                               | <b>USDF – A – STARTER RIDER – S</b>       |                                                        |                                         |                                           |  |  |
| <b>SECOND – 3 – O/GAIG</b>                                                                 |                                           |                                                        |                                         |                                           |  |  |
| K. Monks-Reilly Zugspitze 71.429                                                           | K. Taler JR 66.250                        | <b>USDF – B – STARTER RIDER – J</b>                    |                                         |                                           |  |  |
| K. Herslow Rosmarin 70.000                                                                 | G. DeVincent Summer 65.625                | A. Bierly Mon Ami 64.375                               |                                         |                                           |  |  |
| S. Hoedebecke Zundane P 69.286                                                             | A. Date Tenoru 63.750                     | B. Wamer Son of a Bull 63.125                          |                                         |                                           |  |  |
| K. Monks-Reilly Zugspitze 68.810                                                           | <b>USDF – B – STARTER RIDER – S</b>       |                                                        |                                         |                                           |  |  |
| K. Kruemmling Dahlia 68.571                                                                |                                           |                                                        |                                         |                                           |  |  |
| <b>THIRD – 1 – O</b>                                                                       |                                           |                                                        |                                         |                                           |  |  |
| N. Buberl Whoopie Gold 72.105                                                              |                                           |                                                        |                                         |                                           |  |  |
| N. Buberl Whoopie Gold 72.105                                                              |                                           |                                                        |                                         |                                           |  |  |
| M. Ransenhousen Critical Decision 71.053                                                   |                                           |                                                        |                                         |                                           |  |  |
| K. Monks-Reilly Zugspitze 66.053                                                           |                                           |                                                        |                                         |                                           |  |  |
| <b>THIRD – 2 – O/BLM</b>                                                                   |                                           |                                                        |                                         |                                           |  |  |
| L. Basselini-Thompson Prince 67.561                                                        |                                           |                                                        |                                         |                                           |  |  |
| M. Ransenhousen Critical Decision 67.561                                                   |                                           |                                                        |                                         |                                           |  |  |
| L. Hills Ukarde 63.902                                                                     |                                           |                                                        |                                         |                                           |  |  |
| G. Merriam Fut Fut 63.415                                                                  |                                           |                                                        |                                         |                                           |  |  |
| <b>THIRD – 3 – O/GAIG</b>                                                                  |                                           |                                                        |                                         |                                           |  |  |
| M. Payne Dario 67.692                                                                      |                                           |                                                        |                                         |                                           |  |  |
| K. Adams Premonition SSH 66.410                                                            |                                           |                                                        |                                         |                                           |  |  |
| R. Gross Carlingford Taldi 66.410                                                          |                                           |                                                        |                                         |                                           |  |  |

# SHOW RESULTS

C. Phipps (3) Lecture Series 60.238  
C. Phipps (2) Lecture Series 55.526

## ARABIAN HORSE SOCIETY OF NJ 9/4/11 Judge: Kellerman (R)

### USDF – C

C. McConnell Amber Onyx 64.500

### TRAINING – 1

C. Coffelt-Wood True Blue Zada 61.250

C. Coffelt-Wood SH Splashed in Silk 56.250

R. Wolfe Always Special 55.833

P. Nodecker LH Sporting Life 51.250

### TRAINING – 2

J. Coleman Fhreelancer 77.500

C. Coffelt-Wood True Blue Zada 67.500

C. Coffelt-Wood SH Splashed in Silk 61.071

P. Keeler Wynaave 57.500

### TRAINING – 3

C. Coffelt-Wood True Blue Zada 65.200

C. Coffelt-Wood SH Splashed in Silk 64.000

C. Danese LL Diamond Dupree 60.400

J. Jewczyn Shaht in the Dark 59.200

### FIRST – 1

C. Coffelt-Wood LL Diamond Dupree 60.345

T. Crossen CA Garimond 60.345

M. Georgiev Fox Hollow's Sera Fin 59.655

J. Chin Silver Lining 52.069

### FIRST – 2

J. Coleman Fhreelancer 65.135

N. Baergen Real Spring Z 60.270

M. Georgiev Fox Hollow's Sera Fin 57.568

J. Chin Silver Lining 54.324

### FIRST – 3

N. Baergen Real Spring Z 61.935

T. Crossen CA Garimond 56.452

M. Georgiev Butterscotch 55.806

### SECOND – 1

K. Province Jazzy Bay 60.571

### SECOND – 2

M. Georgiev Butterscotch 52.368

### SECOND – 3

K. Province Jazzy Bay 60.714

### THIRD – 2

N. Baergen Portofino 55.366

### THIRD – 3

K. Adams Premonition SSH 62.051

B. Satkowski Ramses 48.205

N. Baergen Portofino 45.385

### FOURTH – 3

B. Mendiburu What Happen 69.143

### MFS – THIRD LEVEL

B. Satkowski Ramses 54.000

## GOLD CLOVER DRESSAGE 9/4/11 Judge: Harrison (L)

### USDF – A – STARTER RIDER

R. Redden Captain T 90.000

M. McLaughlin Cinnamin 68.125

D. Simpson Oscar 65.000

A. Date Tenora 62.500

### USDF – B – STARTER RIDER

R. Redden Captain T 85.000

D. Simpson Oscar 67.500

M. McCool The Yellow Stone 64.375

T. Dellavecchia Shadow's Fall 63.750

### USDF – A – STARTER HORSE

S. Moore Snow Star 65.000

V. Dellavecchia Jolly Memories 63.125

### USDF – B – STARTER HORSE

S. Moore Snow Star 77.500

V. Dellavecchia Jolly Memories 69.375

### USDF – C – STARTER RIDER

J. Bird Drum Major 71.000

D. Simpson Oscar 62.000

### TRAINING – 1 – STARTER RIDER

J. Bird Drum Major 65.000

### TRAINING – 1 – STARTER HORSE

V. Finkelstein Franklin Square 62.500

L. Owings Black Jack 58.334

### TRAINING – 2

L. Sweeney Rudy 76.072

B. Suydam Ponsano 74.643

V. Finkelstein Franklin Square 70.358

A. Howard Frivolous Bay 68.572

### TRAINING – STARTER HORSE \*

N. Schmidt (HC/2) \* My Girl Friday 78.215

N. Schmidt (HC/3) \* My Girl Friday 75.600

### TRAINING – 3

C. Montgomery Kenzo 78.400

B. Suydam Ponsano 75.200

D. Rankow Djinn 74.000

L. Sweeney Rudy 72.000

### FIRST – 1

D. Rankow Djinn 78.621

B. Suydam Ponsano 70.690

C. Montgomery Kenzo 65.173

### FIRST – 2

C. Montgomery Kenzo 68.379

### FIRST – 3

L. DiSanti Probably Not 77.742

## HUNTINGDON VALLEY HUNT PONY CLUB STARTER HORSE TRIALS 9/5/11

### STARTER

K. Woolf Evita 40.00

E. Plachavy Par Avion 44.00

R. Green Cassidy Blue 45.00

K. Phillips Unknown 1 46.50

### ELEMENTARY

K. Lackey Daisy 35.50

V. Angst Bit O' Honey 38.50

K. Swangler Unknown 39.50

C. Fenkel Jocular 43.50

### BEGINNER NOVICE – I

K. Schmolze Ricardo Million 33.80

G. Warner CNF Erin Darlin 35.70

E. Larson Defies Gravity 36.70

E. Tanenbaum Cando Madison 37.60

A. Horwith Take The Stage 40.00

### BEGINNER NOVICE – II

K. Schmolze Ricardo Time 31.00

L. Hafer Miss Estrapade 33.30

J. Yale Unknown 36.20

N. Zaccheo Ringer 41.60

## SADDLEBROOK RIDGE DRESSAGE 9/10/11 Judges: Jones-Sinelik (r) & Sullivan-Phillips (L)

### LEADLINE – W \*

D. Buchanan Cherrie Blossom 1<sup>st</sup>

### LEADLINE – W/T \*

D. Buchanan Cherrie Blossom 2<sup>nd</sup>

### USDF – A – STARTER RIDER

J. Wilkins PR's Promise-Airy Note 75.625

### USDF – B – STARTER RIDER

E. Priori Marcus Aurelius 73.750

J. Wilkins PR's Promise-Airy Note 72.500

### USDF – A – STARTER HORSE

S. Buchanan Man of Honor 68.125

L. Schroer Clover 68.750

### USDF – B – STARTER HORSE

S. Buchanan Man of Honor 66.875

L. Schroer Clover 66.875

J. Sagui Midsummer Night's Dream 65.625

L. Dobbs Monster Myth 63.125

### USDF – C – STARTER RIDER

E. Priori Marcus Aurelius 71.000

L. Gallagher Catch A Star 67.000

### TRAINING – 1 – STARTER RIDER

E. Priori Marcus Aurelius 72.083

J. Wilkins PR's Promise-Airy Note 69.583

L. Gallagher Catch A Star 56.666

### USDF – C – STARTER HORSE

I. Biely Good Knight 61.000

### USDF – C – STARTER HORSE

M. Lubner Fein Jewel 63.000

B. DeJohn My Fair Lady 63.000

### TRAINING – 1 – STARTER HORSE

I. Biely Good Knight 65.833

### TRAINING – 1 – STARTER HORSE

M. Lubner Fein Jewel 64.166

B. DeJohn My Fair Lady 58.750

### TRAINING – 1 – STARTER HORSE

J. Sagui Midsummer Night's Dream 64.166

L. Dobbs Monster Myth 56.660

### TRAINING – 1 – O

P. DiMedio Artie 61.250

### TRAINING – 1 – O

A. Rickabaugh Mystical Magic 71.600

### TRAINING – 1 – O

A. Rickabaugh Knight Watch 64.583

### TRAINING – 2

K. Swenson Genuine Gold 68.571

B. Lynn Grace 67.857

P. DiMedio Artie 57.571

### TRAINING – 2

A. Rickabaugh Knight Watch 68.214

### TRAINING – 3

K. Swenson Genuine Gold 70.400

B. Lynn Grace 69.600

J. Kane Artie 62.800

C. Kelly Wieland O 58.800

### TRAINING – 3

A. Rickabaugh Mystical Magic 75.833

### TRAINING – 3

A. Rickabaugh Knight Watch 69.696

### TRAINING – 3

A. Rickabaugh Knight Watch 69.600





# SHOW RESULTS

K. John-Klein / Redford's Big Mac  
A. Wean / Oh Barney  
**CT – BABY GREEN (18")**  
K. McNeel Macy 31.87  
H. Souders Scooter 33.75  
S. Kurtz I Found Nemo 35.00  
**CT – STARTER**  
A. Wean Oh Barney 34.00  
A. Coleman Against All Odds 37.00  
**CT – BEGINNER NOVICE**  
E. Kuc Balladeer 29.52  
**CT - NOVICE**  
E. Kuc Balladeer 30.00

## BLUE SPRUCE FARM DRESSAGE 9/14/11 Judge: Wooding (R)

**USDF – A – STARTER RIDER – J**  
B. Ebner Buddy 71.875  
**USDF – A – STARTER RIDER – S**  
P. Carlsen PinkGin 63.125  
**USDF – B – STARTER RIDER – J**  
B. Ebner Buddy 75.000  
**USDF – B – STARTER RIDER – S**  
J. Cloud Indian Summer 67.500  
**USDF – A – STARTER HORSE – J**  
K. Tracey Stuck On You 55.625  
**USDF – B – O – J**  
S. Calve Lite's Spicy Approval 61.875  
**USDF – C – STARTER HORSE – S**  
I. Biely Good Knight 67.500  
**TRAINING – 1 – STARTER RIDER – J**  
N. Cribbin Just Do It 61.250  
**TRAINING – 1 – STARTER RIDER – S**  
J. Cloud Indian Summer 61.250  
**TRAINING – 1 – STARTER HORSE – S**  
I. Biely Good Knight 70.833  
**TRAINING – 1 – O – J**  
A. Rickabaugh Mystical Magic 70.833  
A. Rickabaugh Knight Watch 69.167  
C. Cooper Just Do It 69.167  
**TRAINING – 2 – J**  
S. Calve Lite's Spicy Approval 55.000  
**TRAINING – 2 – S**  
I. Biely Don Cooper 72.500  
A. French Light Up the Dial 71.429  
D. Sheppard Gala Gold County 67.500  
N. McKinley Serendipity 60.714  
**TRAINING – 3 – J**  
A. Rickabaugh Mystical Magic 70.000  
A. Rickabaugh Knight Watch 68.400  
**TRAINING – 3 – S**  
I. Biely Don Cooper 70.400  
T. Wilson Denali 69.200  
A. French Light Up the Dial 67.600  
D. Sheppard Gala Gold County 65.200  
**FIRST – 1 – S**  
N. Vine MVR Midnight Angel 66.207  
J. Sagui The Toolman 64.828  
**FIRST – 3 – S**  
T. Wilson Denali 67.097  
N. Vine MVR Midnight Angel 64.839  
J. Sagui The Toolman 55.806  
N. McKinley Serendipity 53.871  
**SECOND – 1 – S**  
J. Sagui Inspiration 62.571

N. Vine Sable Beedazzled 62.000  
**SECOND – 3 – J**  
A. Rickabaugh Paradox 63.095  
**SECOND – 3 – S**  
N. Vine Sable Beedazzled 62.619  
J. Sagui Inspiration 62.143  
**THIRD – 1 – S**  
G. Rickabaugh Paradox 67.105  
L. Savage Inspiration 57.105  
**THIRD – 3 – S**  
G. Rickabaugh Paradox 68.718  
L. Savage Inspiration 58.974  
H. Holbrook Better Than Gold 53.846  
**FOURTH – 2 – S**  
I. Biely Randolf Scott 67.297  
**FOURTH – 3 – S**  
I. Biely Randolf Scott 66.250  
**PRIX ST. GEORGES – S**  
I. Biely Randolf Scott 64.737  
**MFS – PAS DE DEUX – FIRST LEVEL**  
A. Rickabaugh Photo Image 66.000  
J. Sagui The Toolman

## HJNJ DRESSAGE SCHOOLING SHOW 9/17/11 Judges: Herster (L) & Rickabaugh (L)

**USDF – A – J**  
L. Hornfeck Golly Gee 61.875  
N. Bushman Bring It On Nicky 58.750  
R. Pietruski Just A Lil Rusty 56.250  
J. Brindle-Clark Cycloptic Dilemma 56.250  
**USDF – A – S**  
C. Weimer Reciprocate 71.250  
M. Boettger Yankee Blitz 68.750  
T. Weimer Unsinkable 68.125  
C. Souza Beresford 61.875  
**USDF – B – J**  
L. Hornfeck Golly Gee 65.625  
N. Bushman Bring It On Nicky 65.000  
J. Brindle-Clark Cycloptic Dilemma 64.375  
S. Rodriguez No Invitation Needed 61.875  
**USDF – B – S**  
T. Weimer Unsinkable 66.250  
M. Boettger Yankee Blitz 65.625  
C. Weimer Reciprocate 61.250  
C. Souza Beresford 55.000  
**USDF – C – J**  
L. Hila Scarlet Begonia 56.500  
N. Domenico Zundora ND 54.500  
**USDF – C – S**  
L. Wright Gentlemen's Bett 65.500  
A. Brockel Sunset Dreamer 57.000  
**TRAINING – 1 – J**  
S. Sharp Zippo's Magic Trix 63.750  
N. Domenico Zundora ND 55.000  
**TRAINING – 1 – S**  
L. Wright Gentlemen's Bett 69.583  
A. Brockel Sunset Dreamer 59.166  
**TRAINING – 2 – J**  
G. Fagliarone Dreamberri Bey 79.583  
S. Sharp Zippo's Magic Trix 61.786  
**TRAINING – 2 – S**  
B. Halka Lucy 73.929  
J. Rybakowski Henani 67.857  
S. Rose Sip's Fanci chocolate 65.357

C. Biehl Savannah Anna 64.285  
**TRAINING – 3 – J**  
G. Fagliarone Dreamberri Bey 66.800  
**TRAINING – 3 – S**  
B. Halka Lucy 70.000  
J. Rybakowski Henani 65.200  
S. Rose Zip's Fanci Chocolate 64.400  
C. Biehl Savannah Anna 57.142  
**FIRST – 1 – S**  
K. Mertens Boomer 61.724  
E. Pypiak Sophia 61.379  
J. Kiceniuk Mitey Captive 52.069  
**FIRST – 2 – J**  
L. Boyce Sacchi 56.756  
**FIRST – 2 – S**  
M. Reese Pirueta Del Sol 68.649  
K. Adams Wonton 67.838  
T. Spitzer Bandit's Prodigy 67.568  
K. Rose The Mighty Quinn 66.757  
**FIRST – 3 – J**  
L. Boyce Sacchi 64.516  
**FIRST – 3 – S**  
T. Spitzer Bandit's Prodigy 66.774  
K. Rose The Mighty Quinn 64.516  
J. McColgan Gary 64.194  
H. Russell Lady Livengood 63.226  
**SECOND – TOC**  
M. Hopko Exceptional Bid 61.905  
M. Hopko Exceptional Bid 61.842  
J. McColgan Gary 59.429  
**THIRD – TOC \***  
B. Halka \* Florina 61.220  
D. Hayman-Loa \* R Newsmaker 60.000

## 2011 ESDCTA CHAMPIONSHIP SHOW 9/18/11 Judges: Schmidt (R), Kellerman (R), Adams (r), Jones-Sinelnik (r), Haven (r), Stender (r), Savage (S), Maxfield (R) & Canace (S)

### CHAMPIONSHIP - FINAL

#### DRESSAGE SEAT EQUITATION - J

**Brooke Suydam / Ponsano** 1<sup>st</sup>  
Carly Goldstein / Show Girl 2<sup>nd</sup>  
Nicole Carolan / Tide Creek Diablo 3<sup>rd</sup>  
Nicole Domenico / Zundora 4<sup>th</sup>  
Gina Fagliarone / Dreamberri Bey 5<sup>th</sup>  
Laura Boyce / Sacchi 6<sup>th</sup>

#### DRESSAGE SEAT EQUITATION – S

**Marianne Hopko / Exceptional Bid** 1<sup>st</sup>  
Joelle Rybowski / Henani 2<sup>nd</sup>  
Lindsay Allen / Splash 3<sup>rd</sup>

#### WALK/TROT – J

**Allison Bierly / Mon Ami** 62.500  
Catherine Futterman / Glorious Titania 62.188  
Jessica Brindle-Clark  
Cycloptic Dilemma 55.938

# SHOW RESULTS

## WALK/TROT – S

|                                |               |
|--------------------------------|---------------|
| <b>Graciela Carbajal</b>       | <b>71.250</b> |
| <i>Rhapsody von Star Cross</i> |               |
| Monique Garcia / Raven         | 69.375        |
| Laura Master / Mystik          | 67.500        |
| Daniel Evans / Sadie Starr     | 66.563        |
| Kathy DiVito / Majestic Lady   | 66.250        |
| Kathleen Taler / JR            | 63.750        |

## WALK/TROT/CANTER

|                                  |               |
|----------------------------------|---------------|
| <b>Kylie Dickinson / Ishtar</b>  | <b>71.875</b> |
| Emily Dave' / Krocket            | 67.459        |
| Amanda Perkowski / Bacci         | 66.875        |
| Lorene Wright / Gentleman's Bett | 65.042        |
| Nicole Domenico / Zundora        | 57.792        |
| Ann Brockel / Sunset Dreamer     | 51.042        |

## TRAINING – NOT SHOWN ABOVE 2<sup>ND</sup> – J

|                                    |               |
|------------------------------------|---------------|
| <b>Gia Spargo / Mi' Amore</b>      | <b>72.779</b> |
| Nicole Carolan / Top Gun           | 70.358        |
| David Bierly / Cadenza Aria        | 69.793        |
| Brooke Suydam / Ponsano            | 68.708        |
| Devon Nolt / Koda                  | 67.543        |
| Alanna Goldman / Mea Amicus        | 65.986        |
| Carly Goldstein / Show Girl        | 65.929        |
| Gillian Murphy / Que the Villian   | 64.165        |
| Nicole Carolan / Tide Creek Diablo | 63.365        |
| Alayna Borden / Kismet             | 62.929        |

## TRAINING – NOT SHOWN ABOVE 2<sup>ND</sup> - S

|                                   |               |
|-----------------------------------|---------------|
| <b>Janice Turner / Stilton</b>    | <b>77.050</b> |
| Joelle Rybakowski / Henani        | 72.815        |
| Laura Decker / Da Vinci           | 72.279        |
| Judy Ross / Magnificent Fool      | 68.465        |
| Graciela Caldero / Tamale         | 68.065        |
| Brandi Williams / Top of the Pops | 67.386        |
| Elizabeth Fletcher / Bank Robber  | 66.958        |
| Tracey Wilson / Denali            | 66.515        |
| Lisa Scibetta / Peter             | 64.958        |
| Amy French / Light Up the Dial    | 63.015        |

## TRAINING – SHOWN ABOVE 2<sup>ND</sup>

|                                         |               |
|-----------------------------------------|---------------|
| <b>Monika Dujardin / Princess Di</b>    | <b>70.158</b> |
| Linda Marciente / Equinox Chief Justice | 65.108        |
| Heidi Lemack / Teddy                    | 60.343        |
| Monika Dujardin / Serena                | 60.086        |
| Jessica Kuc / Against All Odds          | 59.965        |

## FIRST – NOT SHOWN ABOVE 2<sup>ND</sup> – J

|                                |               |
|--------------------------------|---------------|
| <b>Laura Boyce / Sacchi</b>    | <b>63.152</b> |
| Ashley Maleson / Martini's Eve | 60.101        |

## FIRST – NOT SHOWN ABOVE 2<sup>ND</sup> – S

|                                      |               |
|--------------------------------------|---------------|
| <b>Kerry Rose / The Mighty Quinn</b> | <b>69.918</b> |
| Kristen Ohlson / Call Seven          | 63.906        |
| Judie DeWitt / Casey Jones           | 62.407        |
| Abigail Arculeo / Sand Spike         | 61.653        |
| Joan DePalo / Prince                 | 61.217        |
| Gail Bott / Koraal                   | 59.526        |

## FIRST – SHOWN ABOVE 2<sup>ND</sup>

|                                     |               |
|-------------------------------------|---------------|
| <b>Karin Worm / Fiona</b>           | <b>66.500</b> |
| Linda Hickey / Whind in the Willows | 65.685        |
| Christopher Schrufer                | 64.129        |
| LJR Toadal Perfection               |               |
| Melissa Reese / Pirueta DelSol      | 62.830        |

## SECOND – NOT SHOWN ABOVE 2<sup>ND</sup>

|                                         |               |
|-----------------------------------------|---------------|
| <b>Marianne Hopko / Exceptional Bid</b> | <b>59.499</b> |
| Julie Tanis / Hooligan                  | 58.196        |
| Candace Phipps / Lecture Series         | 56.755        |
| Lori DiSanti / Probably Not             | 56.266        |
| Kathy Mastragostino / Ambidextrous      | 54.368        |
| Megan Teeters / Cheval                  | 52.839        |

## SECOND – SHOWN ABOVE 2<sup>ND</sup>

|                             |               |
|-----------------------------|---------------|
| <b>Christopher Schrufer</b> | <b>68.666</b> |
| <i>De Feiner Star</i>       |               |
| Adele Hearn                 | 58.365        |
| Independence von Star Cross |               |

## THIRD

|                              |               |
|------------------------------|---------------|
| <b>Nicole Zaccheo / Nash</b> | <b>67.371</b> |
| Katt Mills / Lancelot        | 65.826        |
| Nancy Schmidt / Harleigh     | 63.162        |
| Karin Worm / Wenda           | 59.497        |
| Nancy Krial / Phlyer         | 59.417        |
| Patricia Ryan / Lakota       | 58.575        |

## FOURTH

|                                       |               |
|---------------------------------------|---------------|
| <b>Christopher Schrufer / DeFacto</b> | <b>70.386</b> |
| Beth Davis / Harborside               | 64.203        |
| Nicole Zaccheo / Sky's the Limit      | 59.661        |

## FEI – TOC

|                                      |               |
|--------------------------------------|---------------|
| <b>Christopher Schrufer (PSG)</b>    | <b>67.106</b> |
| <i>Cocktail's Olympic</i>            |               |
| Melisa Reese (I-1) Witster Bratbjerg | 66.317        |
| Amanda Herold (PSG) / Galant         | 65.135        |
| Dominique Cassavetis (PSG)           | 63.422        |
| Charming Princess                    |               |
| Gail Carpeny (PSG) / Napoleon        | 62.895        |
| Lori Shoup (PSG) / Astaire           | 58.948        |

## MFS – USDF – TOC

|                                      |               |
|--------------------------------------|---------------|
| <b>Jessica Kuc (3) / Grande I Am</b> | <b>65.734</b> |
| Margy McKibbin-Favreau (2) / Bridge  | 59.751        |

## CHAMPIONSHIP – INDIVIDUAL CLASES ARE AVAILABLE ON THE WEBSITE

## HPNJ STARTER HORSE TRIALS 9/25/11

### LEVEL I – 12 “ \* ”

|                       |                 |        |
|-----------------------|-----------------|--------|
| A. Goldman            | A Bit More      | 31.00  |
| A. Mulholland         | Star Dancer     | 64.60  |
| M. Dasti              | Ziva            | 67.80  |
| C. Clucas             | Fluffy          | 94.70  |
| <b>PRE-STARTER * </b> |                 |        |
| I. Ingraham           | Citizen's Rock  | 38.50  |
| I. Ruffa              | Angus McFergus  | 56.00  |
| L. Hila               | Scarlet Begonia | 71.30  |
| R. Hila               | Space Bound     | 124.30 |

### STARTER

|           |                 |       |
|-----------|-----------------|-------|
| E. Rucci  | I Spy A Rainbow | 29.50 |
| J. Lackey | Mo' Magic       | 32.00 |
| E. Rambow | Mahal           | 44.00 |
| G. Murphy | Bright Promise  | 46.30 |

### BEGINNER NOVICE

|           |              |       |
|-----------|--------------|-------|
| J. Lieber | Gordito      | 31.90 |
| C. Quinn  | Way To Go Ro | 33.30 |
| S. Halpin | DeLux        | 37.50 |

|               |                |       |
|---------------|----------------|-------|
| J. Ruffa      | Glory on High  | 45.10 |
| <b>NOVICE</b> |                |       |
| C. Blakey     | Highland Storm | 30.40 |
| G. Spargo     | Mi Amore       | 36.50 |
| K. Scripko    | Alli-Oop       | 41.00 |

**Note: An asterisk “ \* ” or “HC” placed after a rider's name indicates that the score cannot be used towards ESDCTA Year-End Awards or as a qualifying ride towards the ESDCTA Championship Show. E-mail questions to [esults@esdcta](mailto:esults@esdcta)**

## SHOW RESULTS

### FORMAT CHANGE

In order to reduce newsletter production costs and go a bit greener than in the past, we have limited the show results in the newsletter to 1st through 4th places.

For a complete list, please go to the web site, [esdcta.org](http://esdcta.org).

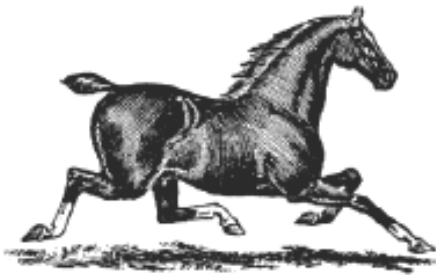
While some of our members have said posting all of the show results on the web site is sufficient, others prefer the hard copy. The Board of Trustees believes this is a good compromise, but welcomes your feedback.

We appreciate your support.

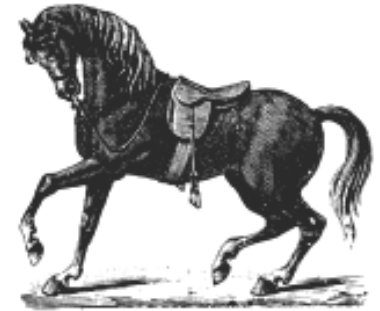
# HORSE TREATS

## Word Search Time!

By Meredith Rogers



D A P P L E T J U M P E R E A B  
 R S S E L M N R A E I J G B B A  
 E F T G A L F A L F A M T R I S  
 S W O A K Y N R T X F Q Y E M C  
 S A D D L E E Y T S F R P E P U  
 A L C L Y Z K S H N E L T C U L  
 G K I T A C B L O A V U P H L E  
 E F Y L O V E W R F E N C E S Q  
 N R B D G X T S O F N G H S I U  
 M I D G A Z E O U L T I J L O C  
 R A E P M H H R G E I N O C N A  
 P I N T O U V W H D N G R A I N  
 J L R U K N X F B T G A B M T T  
 I Y G S H T Y Q R P L E V A D E  
 F O R E H A N D E B N W V Z O R  
 W A R M B L O O D H Y F T R O T



How many of the words below can you find?

- Alfalfa
- Bascule
- Bay
- Blaze
- Breeches
- Canter
- Dapple
- Dressage
- Eventing
- Fence
- Forehand
- Filly
- Grain
- Hoof
- Impulsion



- Jumper
- Levade
- Lunging
- Oxer
- Paddock
- Piaffe
- Pinto
- Pony
- Jump
- Saddle
- Snaffle
- Thoroughbred
- Trot
- Walk
- Warmblood



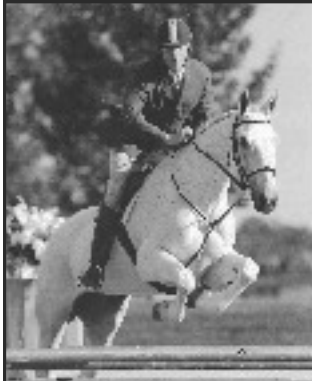
*Garden State and BLM Photos continued from page 1*



*Garden State and BLM Photos continued from page 1*



## ESDCTA Supports Our Business Members...



**HIGH POINT EQUESTRIAN CENTER**  
 LESSONS • TRAINING • BOARDING  
 CROSS COUNTRY SCHOOLING  
 STARTER, BEG. NOVICE & NOVICE  
 LESTER MURPHY, OWNER & TRAINER  
 MONTAGUE, NJ  
 973-293-0033  
 INFO@RIDEIRISHHORSES.COM  
 WWW.RIDEIRISHHORSES.COM

**Liz Gallen**

Boarding  
 Lessons  
 Training




Blue Heron Farm LLC  
 Tewksbury, NJ  
 Phone: 908-236-0331  
 www.blueheroneventing.com  
 email: bhfgallen@aol.com



**Cheret Dressage**  
 Boarding, Training/Instruction, Clinics, Sales

- ⌘ FEI European trainers
- ⌘ Very successful competitors

Stephan Cheret      Caroline Cheret  
 908.310.6864      908.208.6686  
 www.cheretdressage.com  
 Ringoes, NJ



600 Valentine Street  
 Hacketstown, NJ 07840  
 1-800-816-3882

## Get in on the Opportunities for your Business..

**THE BARN** 

**Equestrian Center**  
 1143 Keller Road  
 Wind Gap, PA 18091  
 610-746-9148

---

Instruction available in:

- Dressage
- Hunters
- Jumpers
- Equitation

**Jane Lucrezi**  
 Instructor / Trainer

Equine Insurance Cindy Anderson

---

**blue**  **bridle**

BLUE BRIDLE INSURANCE AGENCY (908) 735-6362  
 P. O. BOX 27 (800) 526-1711  
 PITTS TOWN, N. J. 08867 [www.bluebridle.com](http://www.bluebridle.com)



**Chivalry Hill Farm**  
 Ringoes, NJ  
[www.chivalryhillfarm.com](http://www.chivalryhillfarm.com)  
[info@chivalryhillfarm.com](mailto:info@chivalryhillfarm.com)  
 609-466-4178


⌋ boarding ⌋ training ⌋ sales ⌋

*For all of your dressage needs*

176 US Highway 202 TEL 908.782.1944  
 Ringoes, NJ 08551

**www.skylands-saddlery.com**

Roan Blaszc, authorized saddle fitter  
 Hennig, Schleese & Passier  
 Servicing All Brands

**Skylands**  **SADDLERY**

**STORE HOURS**  
 M,T,W,F,S 10AM – 5PM  
 Thursday 10AM – 8PM  
 Sunday 12PM – 5PM

 **Burlington Farm**  
 Training • Sales • Lessons

**Robert Meli, Jr.**  
 General Manager

260 Burlington Road  
 Freehold, NJ 07728  
 Phone: 732-462-0414  
 Email: [Info@BurlingtonFarm.net](mailto:Info@BurlingtonFarm.net)  
 Website: [www.BurlingtonFarm.net](http://www.BurlingtonFarm.net)

  
**Anjelhart**  
 EQUESTRIAN CENTER

38 Millers Mill Rd., Cream Ridge, NJ  
 Phone : 609.758.7676 • Fax : 609.758.2737  
[www.anjelhart.com](http://www.anjelhart.com)

Indoor & Outdoor Arenas ~ Outside Trainers Welcome ~ Individual Grass T/O

**YELLOWBROOK**  
  
 ~ DRESSAGE ~  
 Center

670 Squankum Yellowbrook Rd. Farmingdale, NJ 732-688-2671

Discounts for Pony Clubs **Patent & Dedicated Training for Horse and Rider**  
**Professional & Experienced Horse Care**

**RHYTHM & BLUES**  
  
**STABLES**  
 In Business Since 1998


Helping You Build Communication & Understanding  
 Between You & Your Horse

Dressage Help for:  
 Combined Training, Hunter, Jumper & Equitation Riders

Heidi Lemack, Trainer / Owner

(609)-758-4918 E-Mail: [RBLstables@aol.com](mailto:RBLstables@aol.com)  
 12 Hill Rd. Allentown, NJ [RhythmAndBluesStables.com](http://RhythmAndBluesStables.com)

**Iron Spring Farm**  
 75 Old Stottsville Rd  
 Coatesville, PA 19320

  
**County**  
**SADDLERY**  
 The Soundness Solution

**Teri Miller**  
 Exclusive NJ Agent  
 Master Saddle Fitter  
[terim@verizon.net](mailto:terim@verizon.net)  
 Custom fit saddles for horse  
 and rider  
 Dressage, Jumping & Eventing



**JOHN ALEXIS**  
Proprietor

476 Milford Mt Pleasant Road  
Milford, NJ 08848

732-616-1856

[bbhstables@embarqmail.com](mailto:bbhstables@embarqmail.com)  
[www.bbhstables.com](http://www.bbhstables.com)

Lessons- Boarding-Training

- SALES
- TRAINING

- BOARDING
- REHABILITATION

**ROSEFIELD FARM**  
101 CHESTERFIELD-ARNEYTOWN ROAD  
WRIGHTSTOWN, NJ 08562  
(609) 638-0151  
[WWW.ROSEFIELDFARM.COM](http://WWW.ROSEFIELDFARM.COM)

**Starlite Acres**

Gail Osterlund

605 Wardell Road, Neptune, NJ 07753

908-804-3389 • FAX 732-922-0871

Email: [stargo58@aol.com](mailto:stargo58@aol.com)



Betsy Steiner

Jessie Steiner

Frenchtown, NJ

Wellington, FL

561-358-6055

[JessieS731aol.com](mailto:JessieS731aol.com)

421 Route 513  
Califon, New Jersey 07830

Phone: (908) 832-7523  
Fax: (908) 832-9473

Answering Service:  
(908) 850-7002

[www.CalifonAnimalHospital.com](http://www.CalifonAnimalHospital.com)

**Jennifer E. Fisher , DC LLC**  
CHIROPRACTOR  
"HELPING PEOPLE AND ANIMALS"

PENNINGTON, NJ

**Cell: (609) 915-4994**

EMAIL: [RIDERJEN77@YAHOO.COM](mailto:RIDERJEN77@YAHOO.COM)

Boarding • Training • Quality Horse Sales  
European Imports

MARY ANN POKUS, B.H.S.I.

729 Lakewood-Farmingdale Rd.  
Howell, NJ 07731

Tel: 732-751-9350  
Cell: 732-500-6434  
Cell: 908-675-7505

**AMY HOWARD DRESSAGE, LLC**

FEI Competitor and Trainer  
CLINICS LESSONS SHOWING SALES

[www.AmyHowardDressage.com](http://www.AmyHowardDressage.com)      [ashoward@hotmail.com](mailto:ashoward@hotmail.com)  
Sergeantsville, NJ      908-310-9384

Insured

(908) 996-6152

*Nancy Clarke*  
**Dressage**  
[www.CastlegateFarm.com](http://www.CastlegateFarm.com)  
Training and Instruction  
*'Balanced' Horses, 'Balanced' Riders*

Castlegate Farm  
424 Kingwood-Locktown Road  
Flemington, New Jersey 08822

*Country Haven*

290 East Lake Road  
Woodstown, NJ 08098  
(856) 769-1916  
Fax: (856) 769-3957

*Earlen Haven*

**Hunters • Dressage • Eventing**  
[www.countryhavenfarms.com](http://www.countryhavenfarms.com)  
[earlen@countryhavenfarms.com](mailto:earlen@countryhavenfarms.com)

*...Reach out to Equestrians, Become a Business Member!*



Newsletter Committee:  
PO Box 185  
Pipersville, PA 18947-0185  
newsletter@esdcta.org

## ESDCTA NOVEMBER CALENDAR OF EVENTS

*Please refer to Omnibus for details ~ESDCTA is not responsible for any show organizer's changes  
Remember, you earn volunteer hours when you volunteer at an ESDCTA registered show!*

| DATE |                         |                                                  | OMNIBUS PAGES    |
|------|-------------------------|--------------------------------------------------|------------------|
| 5    | Saddlebrook Ridge       | Dressage Schooling Show                          | 151              |
| 5    | Bucks County Horse Park | Schooling Horse Trials                           | 160-161          |
| 13   | Oxbow Stables           | Dressage Schooling, Com. Test & Schooling HT     | 156-157          |
| 13   | Bit 'O' Woods           | Dressage Schooling Show & Clear Round            | 152              |
| 13   | Clover Valley Farm      | Dressage Schooling Show, Combined Test & CR      | 159              |
| 20   | High Point Eq. Center   | Dressage Schooling, CT & Horse Trials – New Show | April newsletter |
| 20   | 13th Annual Turkey Trot | Horse Park of New Jersey                         | Info on website  |