



# COLLECTIVE REMARKS

VOLUME 4 ISSUE 8 - OCT 2014

COLLECTIVE REMARKS - WWW.ESDCTA.ORG

PAGE 1

## UPCOMING EVENTS:

*Did you do well this show season? Then get recognized! ESDCTA offers numerous awards at each level. Submit your accomplishments by November 5 and celebrate at the Awards Banquet.*

## Inside this issue:

ESDCTA Dressage Championships	1
President's Message	2
ESDCTA Statement of Purpose	3
Cross Country: Community Calendar	4
Community News	4
A Bit of Fun - Crossword Puzzle	6
Centerline: Dressage News	
Albers Award	7
Foalin' Around	9
NJ Equine Imaging	10
Member Milestones	
Horse Treats	12
Show Results	13-19
Advertisements	22
Business Members	23
October Show Schedule	24

## THE ESDCTA DRESSAGE CHAMPIONSHIPS ANOTHER GREAT SHOW

*By Terry Masters*

This year's dressage championship show proved to be yet again, another wonderful event with entries in every division from Into Walk-Trot to Prix St. Georges. What a showing!! The competitors worked hard all season training and showing in order to perfect their skills and qualify to enter. And all of this hard work was evident in the performances we watched.

Entries were dominated by the Adult Amateur and Junior divisions, with juniors accounting for 60 rides, which is the largest number of junior rides ever. This strong interest shown in dressage by the juniors proves that our sport has a very bright future.

It's always a pleasure to be able to offer this special members-only championship to celebrate and reward our members' efforts. Rounding out the competition were exciting mounted awards ceremonies and a delicious luncheon. High spirits weren't dampened by the afternoon rain storm, and the parties and celebrations continued throughout the stabling and trailer parking areas.

A special thank you from ESDCTA goes out to the sponsors supporting the show: Skylands Saddlery, NJ Equine Imaging, Amy Peterson, Jersey Palms Farm, and Olympia Farms.

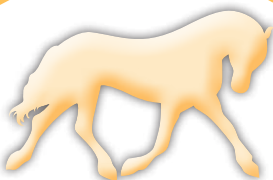
Congratulations to all the riders who placed in their classes. Below are our 2014 Champions.

### 2014 ESDCTA DRESSAGE CHAMPIONSHIP

Dressage Seat Equitation	Macee Morgan / Make Mine A Double	86.000%
Walk/Trot - J	Alia Silvaggio / Written In The Stars	72.031%
Walk/Trot - S	Suzanne Keller / Watson	65.000%
Walk/Trot/Canter	Caitlyn Cuddy / Irish Toffee	65.250%
Training - J ( Below 2nd)	Cameron Manuli / Oscar Wild	64.689%
Training - S (Below 2nd)	Natalie Cantelmi / Dublin Tyme	73.707%
Training (Above 2nd)	AnaMaria Espinosa / Berlin	74.207%
First - J - (Below 2nd)	Morgan Lubner / Fein Jewel	64.858%
First - S (Below 2nd)	Samantha Farrow / Zereinus	71.051%
First (Above 2nd)	Melissa Reese / Rolled Up	65.122%
Second (Below 2nd)	Anna Szabo / Sprach Zarathustra	69.452%
Second (Above 2nd)	Carolyn Laurent / Da Kiekste	69.364%
Third	Wendy Furlong / Santa Lucia	65.886%
Fourth	Debra Tomajko / Storytime	59.698%
FEI - Prix St. Georges	Kya Endreson / Eden Roc	66.645%
MFS - First Level	Sue Mattos / R U Atticus	63.167%



...Continued on page 3



**EXECUTIVE BOARD**

<i>President</i>	Dr. Lisa Toaldo president@esdcta.org	570.491.5147
<i>Vice President</i>	Heidi Lemack rblstables@aol.com	609.758.4918
<i>Treasurer</i>	Keith Adams 1824 Easthill Drive Bethlehem, PA 18017 baakaa1@gmail.com	610.868.3615
<i>Recording Secretary</i>	Beth Ann Adams baakaa68gmail.com	484.554.4501
<i>Members-at-Large</i>		
<i>Eventing</i>	Christy Pelligrino cpeventing422@hotmail.com	
<i>Dressage</i>	Kari Allen rstablefarm@sbcglobal.net	

**BOARD OF TRUSTEES**

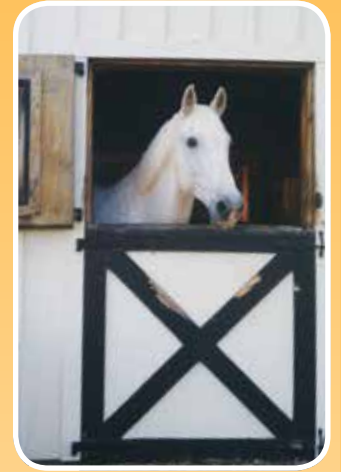
<i>Membership</i>	Laurette Simanski-Snook snook22@comcast.net	
<i>Dressage Competitions</i>	Terry Masters terrymasters@Verizon.net	609.912.9401
<i>Eventing</i>	Janice Pellegrino eventing@esdcta.org	
<i>Youth</i>	Jill Kuc youth@esdcta.org	570.977.1406
	Cindy Roesener youth@esdcta.org	908.797.9754
<i>Education</i>	Melissa Capozzoli education@esdcta.org	610.762.9419
<i>Awards</i>	awards@esdcta.org	
<i>Finance</i>	Gary Maholic finance@esdcta.org	215.489.1557
<i>NJ Equine Advisory Board Representative</i>	Earlen Haven earlen@countryhavenfarms.com	856.769.1916
<i>Marketing</i>	marketing@esdcta.org	

**OFF BOARD****COMMITTEE CHAIRS**

<i>Calendars/Activities</i>	Lynette McMoran activities@esdcta.org	732.449.5322
<i>Grants</i>	Julie Peterson grants@esdcta.org	908.326.3120
<i>Nominating</i>	Susan Lax chivalryhillfarm@aol.com	609-466-4178
<i>Omnibus</i>	Lynette McMoran	732.449.5322
<i>Webmaster</i>	Jessie Kuc webmaster@esdcta.org	
<i>Show Results</i>	Jean Goeltz results@esdcta.org	732.577.0272

**PRESIDENT'S MESSAGE**

Fall is my favorite time of year! As the leaves turn and it's easier to sleep at night with the windows open, it's also a time to reflect on the past show season. ESDCTA had a wonderful, well-attended Championship Dressage show. The weather was perfect. I heard nothing but positive comments about the show and may I say, the club as well! A big thanks to EVERYONE who made the show a success.



We are looking forward to the Horse Trials and the Eventing Championship, I wish them the same success.

Fall is also a time to renew all of your memberships and start thinking about sending in your year-end award forms. Debra and Lynette and their committee are busy making plans for a great party! The USDF Convention is in Boston this year, which is an easy drive, so try to attend! It is for everyone.

We have some great things planned for the end of this year and beginning of 2015, including another Anne Gribbons clinic, a Freestyle Clinic, Learn the New Tests and a Gary Rockwell clinic. I hope to see you all there either riding or auditing; you can learn so much!

The Club will also see some changes, all of which you as members have asked for, such as the return of the printed Omnibus. (Nice to see my old friend back) We will be adding Intro classes to most of our shows and there may be some other changes that I will keep you informed of. All of these are for our club to be more inclusive and fulfill everyone's needs.

So for now enjoy the wonderful Fall weather that the northeast coast brings, get the blankets out, and see you soon! Remember, please feel free to contact me with any issues or concerns.

We, the Board are here for YOU!

Respectfully,

*Dr. Lisa Toaldo*

**Become a Friend to ESDCTA on Facebook!**  
**Follow us on Twitter: @ESDCTA**

*The ESDCTA/Skylands Saddlery Education Series will host another lecture soon. Keep checking this space for more information. Make sure to bring your friends! Light refreshments will be served and ESDCTA members will receive a 10% discount to use that night. Come for the knowledge, stay for the fun of interacting with a group of like-minded people, and leave with some new stuff for you and your horse.*

## ESDCTA Statement of Purpose

Eastern States Dressage and Combined Training Association (ESDCTA) was founded in June 1969 and incorporated in 1970 as a nonprofit educational organization under the laws of the State of New Jersey. ESDCTA with membership open to all interested in dressage and combined training, has the following stated purpose:

*"Whereas it is the desire among many equestrians in the United States to foster and stimulate interest in dressage and eventing in the hope that this may ultimately benefit the United States Olympic Team in its international competition, this organization is established as a nonprofit educational organization."*

Its further purposes are to foster and stimulate interest in dressage and eventing in general, to educate, conduct clinics and hold dressage shows and combined training events.

*...Continued from page 1*

Our club relies on the strong commitment from our members who volunteer to set up the show grounds, help staff the event on show day and help take down and pack up afterwards. No horseshow would be possible without this small army of wonderful people who work so hard to make it possible.

Our Dressage Championship volunteers included:

Dennis Reese, Elaine Landy, Jan Kalafat, Kim Coleman, Ann Schneider, Ellen Brindle-Clark, Jessie Clark, Anne Cizadlo, Tammy Purdy, Marilyn Murray, Tara Kollmyer, Lynette McMoran, Eva Karkas, Kristy Dickinson, Daniella Corrente, Marion O'Conner, Molly Moon, Judith Stratton, Lisa Teresa Mauriello, and the entire show committee: Lisa Toaldo, Beth Ann Adams, Keith Adams, Carol Conner, Ruth Munroe. A special note of recognition needs to go to Nancy Frenick for designing the lovely show program, as well as to Susan Stickle for providing the cover photos.

**THANK YOU, THANK YOU .....all.**

## For all of your dressage needs...

176 US Highway 202  
Ringoos, NJ 08551

### STORE HOURS

M,T,W,F,S 10AM - 5PM  
Thursday 10AM - 8PM  
Sunday 12PM - 5PM

### SHOP ONLINE

[www.skylands-saddlery.com](http://www.skylands-saddlery.com)  
ebay store 'skysaddlery'

**Riding Apparel**  
for men, women & children

**Equipment**  
for horse & rider

**Saddles**  
sales & service

**Horsewear**

**Jewelry**

**Gifts**

**TEL 908.782.1944**

FAX 908.782.1974

[info@skylandssaddlery.com](mailto:info@skylandssaddlery.com)



Global Network of Certified Professionals  
protecting horse and rider from long term damage  
Taught at the German National Riding School

Saddiefit 4 Life®

Ronni Blaszczyk  
Authorized saddle fitter  
Hennig, Schlässe & Passier  
Servicing All Brands



# Skylands SADDLERY

## **ATTENTION ALL MEMBERS: A BRAND NEW IDEA IS ON THE WAY!!**

The inaugural *ESDCTA Final Salute: Our Year in Review* magazine is coming your way in *March of 2015*. This beautiful full color magazine will be a wonderful tribute to your competitive achievements and will also serve as a keepsake and resource guide.

# CROSS COUNTRY...

## New Across Our Region

### COMMUNITY NEWS

ESDCTA sends out pertinent and last minute news items that were too late for the newsletter via email. This eNews message gets sent to all members. If you are not receiving these emails, it is possible that they are getting filtered into your Spam folder or we might not have your correct email address. If you are not receiving them, check your spam folders and make sure that the eNews emails from ESDCTA are not marked as Spam. If you don't see them in your Spam folder, you can login to the website and update your email address in your profile, or you can contact Laurette, our membership chair at membership@esdcta.org, and she'll be happy to update it for you.

### WHAT'S YOUR TALENT??

Let us know what you would like to help us with in 2014. All skills and interests wanted. Have an idea? We want to hear about it. Also, we are currently looking for a Membership chair, an Awards chair and Marketing chair. Remember, this club is what YOU make it. Contact president@esdcta.org if you are interested.

### UPCOMING MEETINGS

**October 8**  
**Board Meeting** 7:15 @ USET  
**Eventing Committee** TBD

### MEMBERSHIP QUESTIONS

For membership questions including updating physical or e-mail addresses please contact:

**Laurette Simanski-Snook**  
 12 Fairway Drive  
 Toms River, NJ 08753  
 membership@esdcta.org

### NEWSLETTER COMMITTEE

Meredith Rogers, Dr. Lisa Toaldo & Rebecca Kuc

**E-mail: newsletter@esdcta.org**

**All submissions are due by the 10th of the month**

**Due to space considerations, the editors reserve the right to edit submitted articles. If possible, the articles will be returned for review of the editing.**

### COMMUNITY CALENDAR

October 4	Bucks County Horse Park's 10th Annv. Pink Ribbon Ride. Visit <a href="http://www.buckscountyhorsepark.org">www.buckscountyhorsepark.org</a> for more information.
October 11-12	ESDCTA Garden State Dressage Show. Go to ESDCTA.org for details.
October 12	ESDCTA Cross-country schooling. Go to ESDCTA.org for details.
October 19	Susan G. Komen Ride for the Cure at the NJHP. Contact Debra Jo Esrog at 609-896-1201 for all of the details.
October 26	NJQHA All-breed charity trail ride, Assunpink Wildlife Refuge. Contact Susan Auer at 908-418-5923 if interested.
November 10	Evening of Celebration and Science, Rutgers Equine Science Center. Email <a href="mailto:cody@aesop.rutgers.edu">cody@aesop.rutgers.edu</a> for more information.
November 13-16	Equine Affaire, Springfield, MA. See <a href="http://equineaffaire.com">equineaffaire.com</a> for details.
November 16	Turkey Trot. See <a href="http://www.horseparkofnewjersey.com">www.horseparkofnewjersey.com</a> for more information.

ESDCTA welcomes proposals from vendors for goods and services. Please contact the appropriate committee.

### Send your Cross Country Information to

[newsletter@esdcta.org](mailto:newsletter@esdcta.org)

### 2014 ADVERTISING RATES

	MEMBERS	NON-MEMBER
FULL PAGE	\$100	\$130
HALF PAGE	\$65	\$85
QUARTER PAGE	\$40	\$60
BUSINESS CARD	\$20	\$30
CARD FOR 3 MONTHS	\$45	\$65
CLASSIFIEDS	\$10	\$15

(per 35 words)

*Deadline: 15th of Prior Month*

Email: [newsletter@esdcta.org](mailto:newsletter@esdcta.org)

*Please have electronic ads in Adobe or .jpg format*

You will receive an invoice for ad via email.

**Send Payment to:** Keith Adams: 1824 Easthill Drive, Bethlehem, PA 18017 Email: [baakaa1@gmail.com](mailto:baakaa1@gmail.com)

## **VOLUNTEER BUCKS CAN NOW BE USED AT OUR LOGOWEAR STORE!**

You can use your volunteer bucks in increments of \$25 to purchase items in our Logowear Store.

The first thing you will need to do is to set up an account at our logowear store through our vendor, Queensboro.com. Here is the link: <http://esdcta.qbstores.com>

Once you have established an account remit the volunteer bucks you want to use to our Logowear Rep:

Debbie DelGiorno  
ESDCTA Logowear  
PO Box 307  
Camden-Wyoming, DE 19934

Also provide the exact email address and name that used to establish your store account to ensure proper credit to your account.

Debbie will send you an email notification once the credit has been placed into your logowear store account.

Debbie will provide you with a credit bucks slip for any unused amount.

For example, if you remit \$30 in volunteer bucks, you will receive a credit back of \$5.

The credit for your volunteer bucks will show up as a gift certificate in your account to use at checkout.  
Contact Debbie DelGiorno with any questions at [logowear@esdcta.org](mailto:logowear@esdcta.org).



*Show season is almost over, but 2015 is just around the corner. I'm again appealing to all of our dedicated members to consider volunteering for a half or full day. The club features several dressage shows each year which will all depend on the dedication of our terrific volunteer staff. Please consider helping out.*

*The full calendar of volunteering opportunities is listed on our new website in the VOLUNTEER section. Thanks for all the help you've provided at past shows. I'm sure I can count on your support again in 2015.*

**Please contact Terry Masters:**  
[terrymasters@verizon.net](mailto:terrymasters@verizon.net)  
or 609-912-9401

## **APPLICATIONS NOW BEING ACCEPTED FOR THE NJ AGRICULTURAL ACHIEVEMENT AWARD**

*Scholarship for H.S. Seniors Interested in a Career in Agriculture or the Sciences*

(TRENTON) – New Jersey residents who are entering their senior year in high school this fall and are planning a career in agriculture or science may apply for the New Jersey Agricultural Achievement Award. One winner will be selected and awarded a scholarship to honor their achievements.

The New Jersey Agricultural Achievement Award, sponsored by Dr. Amy Butewicz, a former New Jersey Equestrian of the Year, was started because of her desire to give back to the community. Worth \$500, this scholarship is meant to assist its recipient in beginning their future in agriculture.

The qualifications for receiving this award include submitting an application, found here [www.jerseyequine.nj.gov/agachievementapplform.pdf](http://www.jerseyequine.nj.gov/agachievementapplform.pdf), a resume along with an essay answering the question, "How has your involvement within your respective nominating organization helped to shape your future career choice?"

In addition, a contestant is required to be a current, active member of an organization either on the New Jersey Equine Advisory Board and/or represented at the Youth Reception portion of the New Jersey State Agricultural Convention. Each organization on the New Jersey Equine Advisory Board and a participant of the State Agricultural Convention is able to nominate a maximum of two contestants.

The winner of the Agricultural Achievement Award must attend the Annual New Jersey Bred Equine Breeders Award Luncheon to be held on Sunday, January 26, 2015 in Eastampton and will read his or her essay to the attendees.

Please mail application, resume and essay by January 2, 2015 to:

NJDA  
Attn: Lynn Mathews  
P.O. Box 330  
Trenton, New Jersey 08625

If you have any questions, contact Lynn Mathews, 609-292-2888 or [lynn.mathews@ag.state.nj.us](mailto:lynn.mathews@ag.state.nj.us).

## A Bit of Fun

### Hint list

Collection of shows	Left flag
Jump ditch jump	Maximum inches of water
Horse or obstacle	Points for 2 <sup>nd</sup> refusal at same fence
Half time limit	Willful walk home
_____ second penalty if you leave too soon	For sitting or jumping
Earn zero point _____ penalties/sec slow poke	Held in October
There's a hole in your shoe	Bigger step
The most fun sport	Dance Time
HORS	Avoid this
Shank max = 4 cm	Mind your melon
Cross Country opens _____ PM	Time for a change
Permitted martingale	Ups N Downs
Level where spurs are required for dressage	Stuff it
60 m X 20 m	It may not be your fault
Unauthorized	Metal or plastic
Competitor	Marker
Must do in dressage, may when jumping	There's manure in his

### Word Search

G N I N N U R W C V V E A X H C F V D W V T N G N  
 A S D F G H J K K F C F V G E V G B U R Q D I C G  
 Z D C S R U O C N O C D R V L E N G T H E N C B B  
 A D C T D C C H C U X G V G M V B G S B T E B H B  
 S A V A K K I A M R O R X Z E I A D R E D C F C D  
 C C A N R D A M C A T O X E T F E A R T R W W X C  
 D O O D L E S P A S T A P I E X W M X E F E E T X  
 E A R A R I P I Z E B R I E Y E E D O G D C A T S  
 E S W R E E D O A T S Y A L E D P L A Y Z I P S Z  
 P L O D S A S N E I T H E R I S E M A G K L R U O  
 S P U R O T W S A F G H J A J K L L N F S V H E K  
 C I P M Y L O H A A D S T A I N S I O T O H P L N  
 W D B J K N S I D G A E R J V S T R E Z S A A D N  
 F A F J M U A P H C E Z A Z C N R F S M A E R D D  
 N N E E T R U O F B X S K Z E X A V A B C C V A N  
 P O R T A P O T T Y Z O H V X Y N O A H K X A S Z  
 K I A C Y C D G H E A R E B A F S D E C L O K A B  
 D T F Y T R O D E L X C N C F V I S S N P N A X A  
 X A S S I S T A N C E K E E R H T M U E A T S Z D  
 S N M L K J E M X W K D R S F C I E H B B Z S I F  
 N I F F O C X A F I T M I E F H O J I M I A S A O  
 I M W O Y M A B Z C Z O K H L T N O S E Y N T T O  
 X I D R O P S L A P U W O O W O O H O O T T M S D  
 A L E T T E R I V E R P L O P P S M U M I T P O C  
 Z E A Y S K I P P Y S E S D C T A A S R E W O L F

## CENTERLINE

### Dressage News



## ALBERS AWARD PRESENTED TO REGION I CHEF D'EQUIPE DEBBIE DELGIORNO

Debbie DelGiorno, recent vice-president of ESDCTA, longtime ESDCTA volunteer, member of the youth committee along with other committees, winner of the 2013 Volunteer of the Year award from Region 1, has also been recognized by the USDF with the Albers Award! It is so wonderful to see Debbie be recognized nationally for her dedication and drive in supporting dressage in the US.

Lexington, KY (July 21, 2014) - The United States Dressage Federation (USDF) announced that the Albers Award perpetual trophy was awarded to Region 1 Chef d'Equipe Debbie DelGiorno, at this year's USDF/Platinum Performance North American Junior & Young Rider Dressage Championships at the Adequan/FEI North American Junior & Young Rider Championships presented by Gotham North (NAJYRC).

"I can think of no better person to win this award. Debbie works tirelessly on behalf of the Region 1 Team, both before and during the event. The fact that Debbie stepped into the Region 1 Chef d'Equipe position to fill Patsy's shoes after her untimely passing makes this even more special" stated Roberta Williams,



PHOTO BY SUSAN STICKLE

USDF FEI Jr/YR Committee Chair.

The Albers Award is named in honor of long time USDF Region 1 Chef d'Equipe, supporter, and good friend, Patsy Albers. The award is presented annually at the USDF/Platinum Performance North American Junior & Young Rider Dressage Championships to the dressage Chef d'Equipe who best demonstrates the same level of dedication, enthusiasm, and team spirit shown by Patsy throughout the years. The award is open to all of the dressage Chefs d'Equipe and

any competitor or Chef d'Equipe can nominate a candidate by submitting a written explanation as to why that Chef deserves to win the Albers Award.

The NAJYRC is the premier equestrian competition in North America for junior and young riders, age 14-21. Young equestrians come from the United States, Bermuda, Canada, Mexico, Puerto Rico, and the Caribbean Islands to vie for team and individual FEI medals in the three Olympic equestrian disciplines of show jumping, dressage, and eventing, as well as the FEI World Equestrian Games disciplines of reining and endurance.



# Final Salute

## 2014

### OUR YEAR IN REVIEW



© SusanJStickle.com

## Dear Friend of ESDCTA -

### **Our "Final Salute 2014" booklet is on the way!**

Please join us to commemorate our members' successes and ESDCTA's events throughout the 2014 competition season. Our inaugural "Final Salute 2014" booklet will cover events starting with the ESDCTA Memorial Weekend Dressage show and culminate with our Year End Awards Luncheon in February 2015.

**This beautiful full color booklet will be mailed to all members.**

### **What a perfect opportunity for you to both support our club and promote your business!**

- Are you a Judge, TD, Veterinarian, Farrier, Chiropractor, Massage specialist, Tack Store or Feed and Grain supplier?
- Do you have a boarding facility?
- Are you a Trainer who wants an opportunity to congratulate your clients' successes or expand your client base?
- Are you a parent, spouse or friend of a competitor looking for a way to let them know how proud you are of them?

### **-- Then this is the perfect publication for you --**

Please use the accompanying advertising reservation form which contains full information regarding deadlines, sizing, pricing and submission of your special ad.

## **ESDCTA "Final Salute 2014" ADVERTISING RESERVATION FORM**

### **Ad Prices**

- \$450 Back Cover (6.5"w x 8.5"h / with bleeds: 6.75"w x 8.75"h)
- \$400 Inside Front Cover (6.5"w x 8.5"h / with bleeds: 6.75"w x 8.75"h)
- \$400 Inside Back Cover (6.5"w x 8.5"h / with bleeds: 6.75"w x 8.75"h)
- \$250 Full page ad (5.75"w x 7.75"h - NO BLEEDS)
- \$175 Half page VERTICAL ad (2.7813"w x 7.75"h)
- \$175 Half page HORIZONTAL ad (5.75"w x 3.7788"h)
- \$100 Quarter page ad (2.7813"w x 3.7788"h)
- \$50 Eighth page ad (2.7813"w x 1.7927"h)
- \$25 Business Resource Listing (name/address/phone/web/35 word description)

Contact Name \_\_\_\_\_

Company/Farm Name \_\_\_\_\_

Mailing Address \_\_\_\_\_

City, State, Zip \_\_\_\_\_

Phone Number \_\_\_\_\_

E-Mail \_\_\_\_\_

### **All ads must be submitted by January 15, 2015.**

Enclosed is my payment in the amount of \$\_\_\_\_\_.

Check Number \_\_\_\_\_

**Ads can be emailed to [terrymasters@verizon.net](mailto:terrymasters@verizon.net)**

**Make checks payable to:** ESDCTA, Inc.

**Mail advertising form and check to:**

Terry Masters, 47 Van Kirk Road, Princeton, NJ, 08540

Questions: 609.912.9410 **(NO RESERVATIONS TAKEN BY PHONE)**

**or visit the website [www.ESDCTA.org](http://www.ESDCTA.org) to pay by credit card.**

### **Ad Specifications**

**Back Cover, Inside Front Cover, Inside Back Cover ads** will be printed in full color and may include full bleeds -- overall size with bleeds must be 6.75" wide X 8.75" high, size without bleeds are 5.75" wide X 7.75" high, set artwork color to CMYK (NO RGB), 300 dpi, fonts embedded or outlined, all graphics embedded, saved as press quality, include all printers marks -- provide in PDF, TIF, EPS, JPG format only.

**Internal Page ads** will be printed in black and white OR full color (your choice) and may NOT bleed -- overall sizes are exact as noted, set artwork color to 100% black or greyscale only, OR CMYK for color (NO RGB), same specifications as listed above.

**Ads will be altered to fit into the specified size purchased if not sent to exact size. In this instance we will not be responsible for distortion of photos included in ad. No proofs will be sent -- ESDCTA will make every effort to review and proofread all ads and assumes no responsibility for errors or omissions.**



## FOALIN' AROUND

Youth News, Activities, and Opportunities

Platinum Performance/USDF Jr/YR CLINIC  
*With funding support provided by the Dressage Foundation* SERIES

USDF presents

Platinum Performance/USDF Region 1 Jr/YR Clinic

Featuring

GEORGE WILLIAMS



Saturday, November 22, 2014

Sunday, November 23, 2014

8:00 AM to 5:00 PM

Hilltop Farm, Inc.  
Colora, Maryland

The application deadline is October 10, 2014

**Auditors** of all ages and levels are welcome and encouraged.

Walk-in registration will also be available on the day of the clinic. Online registration ends November 7.

Click [here](#) to register.

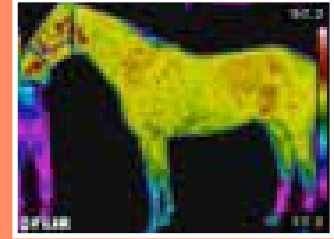
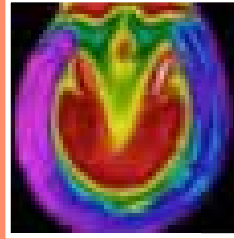
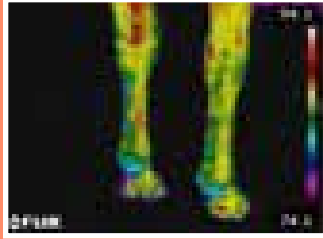


**PLATINUM**  
PERFORMANCE  
*Where good nutrition meets good medicine.*



**The DRESSAGE FOUNDATION**  
*Helps In So Many Ways...*





## What is Veterinary Thermal Imaging?

### NJ EQUINE IMAGING

Is your horse just not felling right? Does he just feel off? He's not lame but just uncomfortable, and you just don't know why? These are questions that every horse owner asks at one time or the other and then struggles with the decision, "should I call the vet? Maybe it is just an abscess or bruise?" It's situations like these, that cause us so much indecision, but now there is a way to identify these pesky non-"specific" lameness issues, that seem to drive each and every one of us buggy! It's called Equine Thermal Imaging.

Thermal Imaging is a noninvasive diagnostic technique, which uses a thermal Imaging camera with a heat sensor to measure the heat emissions from a horse's body. Using a thermal imaging camera, a certified technician from NJ Equine Imaging, takes images that record the temperature variations and displays the heat differences that are illustrated by using a rainbow pattern, blue to white indicating the difference in temperatures. Essentially, what can be seen is the various temperature changes throughout the entire horse's body that may be indicative of an existing injury or one that is about to occur in the horse's soft tissue or joint. After the images are taken, the NJ Equine Imaging Technician prepares a report and interpretation of the images for the client that can be shared with the client's healthcare team to strategize treatment, to determine if additional diagnostic testing is required, or discuss therapeutic treatments.

Thermal Imaging is a qualitative application, meaning that the imager will compare similar body parts, to identify areas of interest. Although the technology is not new, the application is. Thermal Imaging is an innovative technique to gather information that can actually be used to predict if an injury is about to happen, or be used to medically manage an existing condition. The information obtained can be used to start a treatment or rehabilitation process sooner, which may ultimately decrease potential downtime associated with the injury, saving you valuable time and money.

Because the thermal imaging camera is able to detect changes down to 0.1 degrees C, it is far more sensitive than the human hand and is extremely accurate. In addition to heat, the camera will also identify cold areas. Heat or inflammation is generally a result from hemorrhage, external or internal trauma, tendon or joint inflammation, and/or infection. Conversely, cold may be seen as an indication of decreased circulation, nonactive swelling such as edema, or in the presence of obstruction of blood flow or dense scar tissue.

Thermal imaging can also be used as a preventative tool for pre- and post-season evaluation, monitoring of an existing condition, or to determine correct saddle fit. NJ Equine Imaging does not diagnose injury/illness but provides visual data to address the cause of potential injury/illness. It is always recommended that consultation with your veterinarian be done. NJ Equine Imaging has the ability to send the imaging report to their on-staff veterinarian, who is trained in Thermal Imaging and who can communicate with your treating veterinarian regarding the results, if requested. Thermal Imaging is extremely time- and cost-effective and available to all. A Certified NJ Equine Imaging technician will come to your barn or show to image your horses, which takes about 30 minutes to image the whole horse; no equipment, trailering or complicated preparation is needed. Because Thermal imaging is noninvasive, drug- and radiation-free, it's safe for the horse and handler and images are immediately available for review in real time with the owner/trainer or health care professionals, and they can be downloaded on site to discuss the findings and treatment strategies. For more information or to review actual cases follow them on [facebook.com/NJEquineImaging](https://www.facebook.com/NJEquineImaging) or [www.NJEquineImaging.vpweb.com](http://www.NJEquineImaging.vpweb.com) or contact them directly at 609-969-2569.

**NJ EQUINE IMAGING IS LOCALLY OWNED AND OPERATED BY HORSE PEOPLE FOR HORSE PEOPLE.**

Sincerely,

*Laurette Simasuki-Snook*

OWNER/IMAGER  
NJ EQUINE IMAGING L.L.C



# 2015 MEMBERSHIP

## ESDCTA Membership Expires October 31, 2014

**DON'T** Get caught in the DUST! and left behind! Take advantage of our early bird renewal!

Renew before November 1, 2014 and receive a

**FREE TOTE bag!**

IT'S EASY TO RENEW!

1. You can renew on line : go to [ESDCTA.ORG](http://ESDCTA.ORG)
2. Click renew
3. Sign into your account
4. Choose your membership level
5. Make sure your contact information is current
6. Pay by CC: in our **SECURE SYSTEM**
7. Print your Card and start to/continue to enjoy the benefits of being a ESDCTA Member

OR

Fill out the paper membership form and snail mail it with a check or money order payable to ESDCTA to:

Laurette Simanski – Snook

12 Fairway Drive, Toms River NJ 08753

[membership@esdcta.org](mailto:membership@esdcta.org)

609-969-0569

### MEMBERSHIP NOTE!

All MEMBERS must be in GOOD Standing at the time qualifying scores are achieved, in order to participate in year-end awards and championships!

Don't  
Forget

### IMPORTANT DATES TO REMEMBER!

**October 31, 2014**  
**ESDCTA Memberships Expire**

**November 30, 2014**  
**USDF Memberships Expire**

**November 30, 2014**  
**USEF Memberships Expire**

Don't get caught sitting in the saddle looking IN -Because YOU WERE LATE!  
Renew TODAY!

## MEMBER MILESTONES

Know of someone who received an award or just deserves some special recognition? Send in a blurb about their accomplishments and we'll share it with the rest of the ESDCTA community. E-mail [vicepresident@esdcta.org](mailto:vicepresident@esdcta.org) to report your "milestones".

### Sofie Lutfy and Grace Lutfy

both passed their C3 National testing in Pony Club

### Deena Cahill

earned the Frank Bierman Award at the USPC Nationals

### Jorgen Olijslager

and "Northern Quest Lady's Man" completed their first CIC\* at GMHA and finished third.

*Well done!*



DEENA CAHILL ACCEPTING HER AWARD

## HORSE TREATS *by Meredith Rogers*

As we play in our sandbox or gallop through our green pastures, we sometimes forget that not everyone rides in the same saddles that we do, wears the same clothes, or has the same goals. Horse people come in all varieties, but the love of the equine binds us all, as the story below illustrates.

A group of 30 nuns of the Franciscan Poor Clares order fled Cuba in 1959 when Fidel Castro took over and landed in Corpus Christi, Texas, speaking no English. As part of their show of faith they vowed a life of poverty and sought to be self-supporting. To make ends meet at their monastery, they made communion wafers and raised birds and Persian cats. Due to their reputation as animal lovers, someone made a donation in the form of two miniature horses.

Those two horses inspired the nuns to expand, and until recently, they had a herd of approximately 80-100 miniature horses on a 98-acre ranch in Washington County, Texas, where they gave tours around their rigid prayer schedule. Many of the horses had been competitive at American Miniature Horse Association shows throughout the Southwest. However, as of May 2011, the farm was sold and the horses sold off. The nuns continue to embrace nature as part of their calling, and I'm sure their affection for their miniature horses remains in their hearts.



# SHOW RESULTS

<b>ESDCTA DRESSAGE CHAMPIONSHIP SHOW</b>		J. Morris	Claire	56.536	<b>BIT O' WOODS SHOW</b>	
<b>September 13, 2014</b>		J. Herbert	Enzo	54.036	<b>July 19, 2014 Judge: Adams (r)</b>	
<b>Judges: Ebner (S), Haven (r), Boyce (R) &amp; Jones-Sinelnik (r)</b>		K. Magaraci	Little Victories	28.839		
		<b>TRAINING - ABOVE SECOND</b>			<b>USDF - A - STARTER RIDER</b>	
		<b>AnaMaria Espinosa Berlin</b>		<b>74.207</b>	N. Serra	Peachy Keen 61.250
		J. Topinka-Nunn	Rewarding Moment	68.993	K. Randall	Quint Essential 60.313
		L. Romann-Johnson	EMR Maximus	68.786	<b>USDF - B - STARTER RIDER</b>	
		<b>FIRST - J - NOT ABOVE 2<sup>ND</sup></b>			C. Ridgway	Maybelline 65.000
		<b>Morgan Lubner Fein Jewel</b>		<b>64.858</b>	N. Serra	Peachy Keen 62.813
		M. Morgan	Make Mine A Double	61.763	S. Bendorf	Tater 57.500
		E. Hochmiller	Daddy's Dollars	58.394	<b>USDF - B - STARTER HORSE</b>	
		M. Chamas	Rolex	58.394	C. Ridgway	Peng 68.875
		<b>FIRST - S - NOT ABOVE 2<sup>ND</sup></b>			<b>USDF - B - O</b>	
		<b>Samantha Farrow Zeneinus</b>		<b>71.051</b>	A. Stockinger (HJC)	*Corofin 68.438
		L. Reilly	Drifters Way	70.571	A. Stockinger	Corofin 59.063
		J. Goeltz	Duncan	66.565	<b>USDF - C - STARTER RIDER</b>	
		K. Briehler	Arkady	62.446	C. Swanson	Chester 68.000
		C. Varettoni		62.147	Q. Ridgway	Peng 65.250
		Token Of My Affection			S. Bendorf	Tater 61.000
		K. Boehme	Know Farm Reilly	61.476	R. Bradford	Bentley 60.750
		V. Shilton	Wise Consul	61.748	M. Bryne	Teddy Bear 60.500
		L. Nuzzo	Bandira	60.299	<b>USDF - C - O</b>	
		K. Fitzmaurice	My First One	60.628	Lin. Lewis	Broadway Bernie 53.750
		C. Caprio	Amber's Mystique	56.857	<b>USDF - C - STARTER HORSE</b>	
		<b>FIRST - ABOVE SECOND</b>			Q. Ridgway	Peng 66.250
		<b>Melissa Reese Rolled Up</b>		<b>65.122</b>	<b>TRAINING - 1 - O</b>	
		S. Mattos	R U Atticus	63.141	T. Mokszycki	Little Victories 52.500
		N. Bincarusky	Rafiki	60.735	Lin. Lewis	Broadway Bernie 52.292
		J. DePalo	Prince	60.772	<b>TRAINING - 2</b>	
		<b>SECOND - BELOW SECOND</b>			B. Temme-Soifer	Secret Aurora 62.500
		<b>A. Szabo Sprach Zarathustra</b>		<b>69.452</b>	<b>TRAINING - 3</b>	
		K. Dickinson	Ishtar	60.457	B. Temme-Soifer	Secret Aurora 64.400
		K. Bate	LL Designer	58.330	D. Burke (HC) *	Ice Nine 64.400
		A. McAuliffe	Franz H	56.961	D. Burke	Ice Nine 62.000
		<b>SECOND - ABOVE SECOND</b>			<b>FIRST - 1</b>	
		<b>Carolyn Laurent Da Kiekste</b>		<b>69.364</b>	M. Brynner	Secret Aurora 64.138
		C. McConnell	Witster Bratbjerg	68.493	C. Caprio	Amber's Mystique 62.069
		S. Herster	Dario	66.140	<b>FIRST - 2</b>	
		<b>THIRD</b>			C. Caprio	Amber's Mystique 64.865
		<b>Wendy Furlong Santa Lucia</b>		<b>65.886</b>	J. Goeltz	Duncan 64.595
		L. Romann-Johnson	Zion	64.296	M. Lubner	Fein Jewel 60.406
		<b>FOURTH</b>			C. Tucker	Bank Robber 56.487
		<b>Debra Tomajko Storytime</b>		<b>59.698</b>	<b>FIRST - 3</b>	
		<b>FEI - PRIX ST. GEORGES</b>			J. Goeltz	Duncan 65.968
		<b>Kya Endreson Eden Roc</b>		<b>66.645</b>	M. Lubner	Fein Jewel 57.742
		S. Rush	Zephyr	64.671	C. Tucker	Bank Robber 56.291
		W. Furlong	Amazzing	62.434	<b>BEGINNER NOVICE - A</b>	
		B. Halka	Florina	61.382	E. Schaffer	Tigger 34.12
		W. Furlong	Jazzmine	60.461	V. Sansone	Mad Money 39.47
		E. Banks	DBA Jeremiah	55.987	M. Ercolani	Chester 39.47
		<b>MFS - FIRST LEVEL</b>			C. Mroz	Bold Cherokee Ruler 40.52
		<b>Sue Mattos R U Atticus</b>		<b>63.167</b>	D. McComb	Bentley 42.63
					C. Veitch	Paint By Numbers 48.42
					B. Glogowski	Finely Sizzled 53.68d
					<b>BEGINNER NOVICE - B</b>	
					B. Heitzmann	Deardat 31.00
					L. Ingraham	Citizen's Rock 35.50
					M. Ercolani	Chester 35.50
					E. Schaffer	Tigger 36.50.
					K. Nelson	For Pete Sake 38.50
					C. Mroz	Bold Cherokee Ruler 39.00

**ESDCTA DRESSAGE CHAMPIONSHIP SHOW**  
**September 13, 2014**  
**Judges: Ebner (S), Haven (r), Boyce (R) & Jones-Sinelnik (r)**

**DRESSAGE SEAT EQUITATION**  
**Macee Morgan 86.000**  
**Make Mine A Double**  
M. Lubner Fein Jewel 77.000  
C. Waciega No Sudden 76.000  
J. Peterson Uberzaun 60.000  
C. Cuddy Irish Toffee 55.000  
A. Greulich Heart River 53.000

**WALK/TROT - JUNIOR**  
**Alia Silvaggio 72.031**  
**Written In The Stars**  
A. Sparacio That's Amore' 67.031  
S. Stone Noel 65.938  
L. Varga Johnstone's Finnmark 65.781  
C. Waciega No Sudden 65.625  
M. Dorschute Oula Moola 63.906  
I. Solimine Phoenix 59.844  
C. Allen Zachary 55.156

**WALK/TROT - SENIOR**  
**Suzanne Keller / Watson 65.000**  
**WALK/TROT/CANTER**  
**Caitlyn Cuddy Irish Toffee 65.250**  
T. Marsh CM Flip Over Me 62.604  
E. Scott All Or Nothing 57.208

**TRAINING - J - BELOW SECOND**  
**Cameron Manuli Oscar Wild 64.689**  
C. Gallagher Arturo 60.575  
R. Pietruszki Cotton Eye Joe 60.393  
H. Walker Just Toby 60.421  
S. Bendorf Tater 51.261  
K. Necowitz Champion Spirit 33.929

**TRAINING - S - BELOW SECOND**  
**Natalie Cantelmi Dublin Tyme 73.707**  
G. Carbajal Euro Exchange 70.036  
M. Quigley Moon River 67.196  
A. Greulich Heart River 66.075  
S. Farrow Dalto BLH 65.975  
O. Banyon Chaman 63.614  
J. Kobilinski Tupence 62.886  
S. Bilder The Magician 61.254  
M. Colgan Call Seven 60.796  
M. Kunsman Madelyn 60.918  
D. Gertler Mystic Max 60.214  
M. Gelrod Let It Rain 59.796  
J. Peterson Uberzaun 59.346  
C. Varettoni He's The Ticket 59.132  
M. Money Lorenzo 59.025  
E. Richardson Sebastian Speaks 57.039

# SHOW RESULTS

A. Dobbs Possee In Command	40.50	C. Anderson Brigadier67.419	L. McCullough-Leibfried Decorus	65.395	
S. Barton The Magic Bus	41.00	J. Berube En La Sangre	67.258	K. Heller Raphael	63.816
C. Veitch Paint By Numbers	43.00	D. Rosenfeld Dundrum	64.677	M. Dibiccari Dean	63.158
B. Glogowski Finely Sizzled	46.00	D. Ponessa PG Ganda	64.194	A. Krossen Integrity	63.026
<b>NOVICE - A</b>		M. Van Benschoten Ricardo	62.419	N. Radojicic Donnatelli	59.211
A. Chlieminski Drama Queen	32.14	A. Bakic Twentieth Century Fox	62.097	<b>INTERMEDIAIRE - I</b>	
S. Bartopn The Magic Bus	40.43	M. Andrews Winnetou	60.000	H. Mason Romantico SF	73.158
M. Fenrick More To Love	45.21	<b>SECOND - 1</b>		C. Roesener Sonaro	67.500
<b>NOVICE - B</b>		H. Mason Cheval Z72.857		<b>INTERMEDIATE - B</b>	
J. Bull Manos de Piedra	30.50	L. Sigal Lorelei	68.000	D. Gallagher Argo Conti Tyme	71.429
L. Hood Final Eclipse	38.50	L. MaurielloCrossfire's Desert Rose	59.857	<b>GRAND PRIX</b>	
<b>TRAINING - A</b>		D. Thamsen Laliq	55.429	M. Poulin Flair	71.300
A. Chlieminski Angel Hearted	38.09	<b>SECOND - 2</b>		H. Mason Zar	69.200
<b>TRAINING - B</b>		D. Hall Laliq	70.132	J. Greener Mudzima	59.800
A. Tavani Happy Go Lucky	35.45	H. Mason Cheval Z68.158		<b>GRAND PRIX - DEVELOPING HORSE</b>	
A. Tavani (HC) * Happy Go Lucky	37.27	K. Dickinson Ishtar	62.500	S. Rozboril GP Blessning N Honor	63.000
<b>PRELIMINARY - A</b>		<b>SECOND - 3</b>		<b>MFS - FIRST LEVEL</b>	
M. Bryner MLB Magic Man	38.18	H. Mason Esperanza	70.952	C. Regalbutto Brazen	71.367
		T. Zinglersen Wichinka	69.048	K. Mullins My Last Hurrah	69.533
		S. Holden Cano Cristales	68.690	C. Anderson Brigadier62.000	
		S. Rose Otto	67.262	<b>MFS - SECOND LEVEL</b>	
		K. Steines Princess Di	65.595	H. Mason Esperanza	76.633
		N. Burrini Jay Gallant Kennedy	65.357	<b>MFS - FOURTH LEVEL</b>	
		K. Dickinson Ishtar	65.119	A. Tozour Baltic Rose	69.400
		D. Hall Laliq	64.643	<b>PARA EQUESTRIAN - TOC</b>	
		J. Haggas Cameo	64.405	D. Ponessa Amor	79.130
		V. Guthrie Maschtab	63.571		
		P. Irving Wizzi	61.786		
		<b>THIRD - 1</b>			
		D. Dion Zazou	64.211		
		R. Cowden Zed	60.789		
		L. Hickey Whind In The Willows	59.474		
		S. Edwards Ferrari	49.079		
		G. Pavel Human Touch	46.579		
		<b>THIRD - 2</b>			
		K. Theallet Bolero LS	67.317		
		M. Arvystas Napoleon	55.244		
		<b>THIRD - 3</b>			
		G. McPherson Chopard	79.615		
		L. Kaptein Deveroux	63.590		
		L. Zinglersen Wolken's Dueset	62.051		
		P. Piccillo Tribute	60.128		
		M. Arvystas Napoleon	58.590		
		<b>FOURTH - 1</b>			
		M. Benedict Bernt L'Orange	64.429		
		L. Sigal Friendly Fil	64.286		
		P. Piccillo Tribute	63.571		
		A. Favorito Hadley	59.857		
		C. Fanning Ashmaan	59.286		
		<b>FOURTH - 2</b>			
		F. Magazzeni Findlay's Stuart	71.351		
		A. Tomson Teodor	66.757		
		M. Benedict Bernt L'Orange	57.297		
		<b>FOURTH - 3</b>			
		F. Magazzeni Findlay's Stuart	68.000		
		M. Dujardin Suriolan	64.000		
		A. Tomson Teodor	62.500		
		<b>PRIX ST. GEORGES</b>			
		K. Steines Delilah CH	68.421		
		J. Campling Ommen	66.316		
		L. Kaptein Franklyn	66.053		

## SUSSEX COUNTY DRESSAGE III

July 20, 2014

Judges: Barbosa (S), Poulin, Ebner (S) & Wooding (S)

### TRAINING - 1

K. Rose Benjamin Blue	70.417
S. Holden Coeur D'espri	68.958
S. Parker-Brasch Finnegan	57.708

### TRAINING - 2

A. Jackson FS Djambo	72.857
J. Herbert Enzo	71.071
H. Dellechiaie Finnian's Chase	66.071
M. Ferko Linea	65.714
R. Drews You Fascinate Me	64.286
L. Wingert New Beginning	63.750
J. Lopez Punkin's Dusty Breeze	61.786

### TRAINING - 3

A. Jackson FS Djambo	71.600
M. Ferko Linea	61.800
J. Lopez Punkin's Dusty Breeze	60.200
H. Dellechiaie Finnian's Chase	60.000
L. Wingert New Beginning	57.400
R. Drews You Fascinate Me	55.800

### FIRST - 1

D. Gallagher Everton	80.000
S. Rose Otto	68.103
J. Herbert Enzo	67.000
K. Theallet Allyah	66.800
F. Magazzeni Codriaan	66.379
A. Bakic Twentieth Century Fox	64.310
H. Howell Gordias	63.000
M. Andrews Winnetou	61.379
S. Holden Coeur D'Espri	59.200
L. Sack Egoist Von De Kruishoeve	55.517

### FIRST - 2

E. Swartout HPF Arrow	61.892
N. LaSala Clover	57.703

### FIRST - 3

T. Zinglersen Rania VF	71.774
L. Zinglersen Kalinka	68.226
G. Pavel Flowering Plums Tiara	67.581

## OXBOW SHOW

July 20, 2014 Judge: Herster (L)

### USDF - A

L. Kalapodakis Little Princess	65.938
J. Calabrese Sweet Caroline	63.438
C. Albinson King Toby the First	63.125
P. Mulhaupt Madigan D	59.315

### USDF - B

L. Kalapodakis Little Princess	69.688
J. Calabrese Sweet Caroline	68.750
K. Vanderbeck Mystic Sugarwood	65.000
C. Albinson King Toby the First	64.688
P. Mulhaupt Madigan D	64.688

### USDF - C

K. Arthur My Jennaration	67.500
J. Calabrese Sweet Caroline	65.000
P. Mulhaupt Madigan D	64.500
K. Vanderbeck Mystic Sugarwood	64.500

### TRAINING - 1

D. Kalapodakis Crimson	59.792
------------------------	--------

### TRAINING - 2

J. CohenTre's Jolie	67.143
D. Kalapodakis Crimson	64.821
J. Morris Claire	64.107
E. Richardson First Love	60.179

### TRAINING - 3

E. Hatenboer Star	64.800
J. CohenTre's Jolie	63.000
J. Morris Claire	62.800
E. Richardson Sebastian Speaks	61.600
C. Gruber Jarich Fant Alddjip	59.400

### FIRST - 1

E. Hatenboer Star	65.000
-------------------	--------

# SHOW RESULTS

## FIRST - 2

E. Hatenboer Star 63.108

## SECOND - 1

D. Vannostrand Mr. Splash Bug 65.428

## SECOND - 2

D. Vannostrand Mr. Splash Bug 61.974

## HT - TOC

C. Albinson (E) Nickelicious 35.62

L. Kalapodakis (I/E) Macaroni Pony 37.43

J. Thorward (I) Pepper 39.68

S. Mayfarth (E) Nicky 39.68

## BOUNTIFUL BLESSINGS FARM SHOW

July 26, 2014 Judge: Allen (L)

## USDF - A

A. Walenjus (SR) Fiddler's Choice 65.000

L. Wendal (SH) Denmark 63.750

K. Hennessy (SR) Pic's Pleasure 63.125

## USDF - B

L. Wendal (SH) Denmark 68.750

L. Walenjus (SR) Fiddler's Choice 68.125

K. Hennessy (SR) Pic's Pleasure 63.437

## USDF - C

K. Wojeik (SR) Toulouse 70.500

A. Lorenzo (SR) Little Bit O Lovin 66.250

M. Bethavas (SR) Pic's Pleasure 60.250

## TRAINING - 1 - STARTER

K. Wojeik (SR) Toulouse 67.708

A. Lorenzo (SR) Little Bit O Lovin 61.041

M. Bethavas (SR) Pic's Pleasure 60.416

## TRAINING - 1 - O

C. Arre Double Oh Dyl 64.437

## TRAINING - 2

J. Topinka-Nunn Rewarding Moment 72.321

M. Gelrod Let It Rain 65.535

B. DeJohn My Fair Lady 61.607

C. Arre Double Oh Dyl 60.178

## TRAINING - 3

J. Topinka-Nunn Rewarding Moment 74.400

M. Gelrod Let It Rain 66.600

B. DeJohn My Far Lady 55.800

## FIRST - 1

N. Rettino-Lambert Kosmic Karma 52.068

## FIRST - 2

V. Shilton Wise Consul 59.054

## FIRST - 3

V. Shilton Wise Consul 60.645

## SECOND - 1

L. Savage Photo Image 64.857

G. Rickabaugh Mystical Magic 56.428

I. Biely Kosmic Karma 54.142

N. Vine Wild Memory 51.571

## SECOND - 2

C. McConnell Witster Bratbjerg 62.763

## SECOND - 3

C. McConnell Witster Bratbjerg 62.857

N. Vine Wild Memory 52.857

I. Biely Kosmic Karma 51.785

G. Rickabaugh Mystical Magic 51.190

## THIRD - 1\*

I. Biely \* Don Cooper 54.736

N. Rettino-Lambert\* Irish Lore 49.210

## THIRD - 3\*

I. Biely \* Don Cooper 52.051

## FOURTH - 1\*

S. Lutgben \* Bonjour 48.428

## FOURTH - 3\*

S. Lutgen \* Bonjour 47.000

## MFS - THIRD LEVEL\*

N. Rettino-Lambert\* Irish Lore 51.000

## SUDDENLY FARM DRESSAGE SHOW

July 27, 2014 Judge: L Ash (L)

## USDF - A - STARTER RIDER - J

A. Silverman Joe Cool 62.813

## USDF - B - STARTER - J

C. Ridgway (SR) Maybelline 70.000

C. Ridgway (SH) \* Maybelline 66.875

A. Silverman (SR) Joe Cool 66.250

## USDF - A - STARTER RIDER - S

P. Zimmerli Just The One 69.376

## USDF - B - STARTER RIDER - S

P. Zimmerli Just The One 68.750

## USDF - C - STARTER - J

Q. Ridgway (SH) \* Peng 64.000

Q. Ridgway (SR) Peng 58.250

## USDF - C - STARTER RIDER - C

C. Whalen Ordained 66.250

C. Whalen \* Ordained 63.250

## TRAINING - 1 - STARTER - J

S. Bendorf Tater 57.920

## TRAINING - 1 - STARTER - S

T. Moszycki Little Victories 56.460

## TRAINING - 2 - J

K. Necowicz Champion Spirit 71.250

C. Macauley Little John 66.610

C. Litwin He's a Devil's Match 66.430

S. Bendorf Tater 61.960

## TRAINING - 2 - S

E. Scelba-Johnson Couture 67.321

E. Scelba-Johnson EMR Arising 64.107

T. Moszycki Little Victories 62.860

S. Parnell Patchamo 61.964

K. Magaraci Mr. November 60.178

## TRAINING - 3 - J

K. Necowicz Champion Spirit 71.000

C. Litwin He's a Devil's Match 65.800

C. Macauley Little John 62.800

## TRAINING - 3 - S

L. Litwin Bentley 65.800

K. Magaraci Little Victories 65.000

E. Scelba-Johnson EMR Arising 64.800

K. Theissen Santonio 63.800

K. Magaraci Mr. November 61.000

## FIRST - 1 - S

C. Curtain Veritas 65.000

## FIRST - 2 - J

M. Lubner Fein Jewel 66.486

## FIRST - 2 - S

J. Landau Justawee Graceful 69.594

L. Litwin Bentley 64.189

## FIRST - 3 - J

M. Lubner Fein Jewel 65.645

## FIRST - 3 - S

C. Curtain Veritas 64.677

## SECOND - 2 - S

K. Bloomer Archimedes 62.368

## FOURTH - 1

E. Scelba-Johnson Djinn 66.571

H. Holbrook Better Than Gold 59.285

## FOURTH - 3

H. Holbrook Better Than Gold 51.500

## MFS - FIRST LEVEL

J. Landau Justawee Graceful 73.083

## SUMMER DAYS - I

July 30, 2014

Judges: Cizadlo (R) & Ebner (S)

## TRAINING - 1

F. Magazzeni Richochet 62.083

## TRAINING - 2 - BLM

A. Bean Capitano 74.464

J. Bryant Dux 73.571

S. Bilder The Magician 71.071

O. Banyon Chaman 69.464

C. Varettoni He's The Ticket 65.714

L. Starliper Utopian 65.536

A. Kavey Snow Day 63.750

S. Rocap Bacchus 59.821

Je. Kuc Just Takin' Chances 59.286

## TRAINING - 3 - GAIG

L. Schmidt Fieriaan 70.800

A. Bean Capitano 69.400

B. Hay Lochlan 69.200

F. Magazzeni Lanier 69.032

R. Barstow Southporte 68.600

J. Bryant Dux 68.600

O. Banyon Chaman 68.000

R. Barstow Rio Tabasco 67.400

J. Herbert Enzo 65.200

F. Magazzeni Codriaan 65.200

L. Starliper Utopian 63.600

A. Kavey Snow Day 63.472

S. Bilder The Magician 62.800

S. Rocap Bacchus 61.400

D. Rose Talywern Fair Rose 60.400

C. Varettoni He's The Ticket 60.000

## FIRST - 1

F. Magazzeni Codriaan 63.448

J. Herbert Enzo 61.897

M. Dujardin Silver Snaffles Lady Chaser 57.586

D. Rose Talywern Fair Rose 57.586

## FIRST - 2 - BLM

M. Dujardin Barock 74.054

C. Varettoni Token of My Affection 64.595

D. Raben Another Chapter 63.919

L. Higger Juliet 56.486

## FIRST - 3 - GAIG

R. Chowanec Kynymont Bellytobin 74.032

B. Hay Lochlan 72.742

J. Foulon Ferrero 68.548

M. Dujardin Barock 68.065

# SHOW RESULTS

R. Chowanec Kynynmont Ballytobin	67.903	J. Youse	Arturo	68.784	J. Foulon	Ferrero	73.700		
M. Dujardin Barock	67.903	L. King	Time Lord	68.243	A. Kavey	Dear Heart	73.000		
C. Varettoni Token Of My Affection	66.260	A. Tomson	Teodor	65.676	A. Kavey	Dear Heart	70.500		
L. Higger Juliet	66.129	B. Sproule-Hansen	Liberty	65.541	J. Foulon	Ferrero	69.500		
D. Raben Another Chapter	62.581	M. Dujardin	Suriolan	62.568	K. Mullins	My Last Hurrah	66.900		
D. Raben Another Chapter	61.774	D. Tomajko	Storytime	54.324	K. Mullins	My Last Hurrah	62.833		
C. Varettoni Token Of My Affection	61.774	<b>FOURTH - 3 - GAIG</b>			<b>MFS - THIRD LEVEL</b>				
B. Hay Lochlan	60.645	J. Youse	Arturo	64.500	Je. Kuc	Just Takin' Chaces	63.667		
L. Higger Juliet	57.419	S. Lofting	Sundance	66.375	<b>MFS - INTERMEDIAIRE - I - BLM/GAIG</b>				
D. Rose Talywern Fair Rose	54.677	F. Magazzeni	Findlay's Stuart	63.500	H. Mendiburu	What Happen	72.675		
<b>SECOND - 1</b>				J. Youse	Arturo	62.750	H. Mendiburu	What Happen	71.375
L. Mauriello Crossfire's Desert Rose	50.143	F. Magazzeni	Findlay's Stuart	62.625					
<b>SECOND - 2 - BLM</b>				A. Tomson	Teodor	62.250			
B. Sproule-Hansen Merlin	69.342	H. Greenfield	Doillarprinz	61.125	<b>SOMEWHERE FARM</b>				
K. Dickinson Ishtar	63.553	R. Chowanec	59.250	<b>August 2, 2014 Judge: Jones-Sinelik (r)</b>					
A. Espinosa Alegria	61.974	Kynynmont Gunsmoke's Gideon		<b>USDF - A</b>					
S. Campbell Dendarah	61.579	M. Dujardin	Suriolan	58.250	T. Valeri	Liger	65.300		
F. Magazzeni My Last Hurrah	58.947	D. Tomajko	Storytime	55.875	C. LaRose	Dance With Me	63.400		
<b>SECOND - 3</b>				<b>USDF - B</b>					
S. Martin Benefactor RRS	74.643	B. Davis	Feivel Moussekewitz	69.079	T. Valeri	Liger	62.800		
L. Chumley Saracchi	70.357	R. Cowden	Arami	68.158	C. LaRose	Dance With Me	61.600		
B. Sproule-Hansen Merlin	67.500	R. Cowden	Arami	67.237	<b>TRAINING - 1</b>				
S. Martin Benefactor RRS	67.381	I. Mattisson	Sebastien	66.447	T. Litzinger	Oliver Twist	65.400		
B. Hay Faolan	66.667	N. Burberl	Don Perygnon	66.316	<b>TRAINING - 2</b>				
L. Chumley Saracchi	64.167	J. Zammataro	Ghostbuster	62.763	K. Necowitz	Champion Spirit	70.700		
E. Donaldson Audi	63.452	M. Sinks	Donna Karen	62.237	<b>TRAINING - 3</b>				
S. Herster Dario	63.095	J. McGinty	Playboy	62.237	K. Necowitz	Champion Spirit	70.800		
K. Dickinson Ishtar	60.357	S. Lofting	Sundance	61.974	T. Litzinger	Oliver Twist	60.000		
A. Espinosa Alegria	60.000	L. Tell	Cygaro	61.974	K. Stevens	Repent's Image	57.400		
K. Strus Cambuscan	58.095	J. Zammataro	Ghostbuster	60.658	<b>FIRST - 1</b>				
<b>THIRD - 1</b>				G. Buxton	Safari	59.737	K. Stevens	Oliver Twist	66.700
N. Buberl Rania	72.500	L. McCullough-Leibfried	Decorus	57.895	K. Stevens	Repent's Image	59.500		
J. Foulon Mr. M	67.500	H. Greenfield	Wild Houston	57.368	<b>FIRST - 3</b>				
S. Tarshis Harkon	61.842	M. Davis	Weekend Pleasure	55.132	K. Stevens *	Oliver Twist	66.500		
T. Miller Bossa Nova	58.816	P. Liddell	Furst Ferro	54.605	<b>FLYING CHANGE FARM</b>				
D. Cassavetis Je' Taimie	56.974	B. Satkowski	Ramses	54.474	<b>August 2, 2014</b>				
<b>THIRD - 3 - GAIG</b>				<b>Judges: Griffin (r) &amp; Schmidt (S)</b>					
J. Fies Privilege	75.256	<b>INTERMEDIAIRE - I - BLM/GAIG</b>		E. Englund KGS Horgaard Hustler	70.395	<b>DRESSAGE SEAT EQUITATION</b>			
H. Mason Est Est Est	72.949	I. Mattisson	Sebastian	70.000	S. Stone	Noel	70.100		
L. Chumley Saracchi	72.051	J. Paine	Westen	68.553	L. Varga Johnstone's Finnmark		69.500		
R. Chowanec	68.718	E. Englund HGS Horgaard Hustler	66.579	B. Maxon	Wilson	Zachary	67.300		
Kynynmont Cooper O'Grady		B. Maxon	Wilson	65.921	R. Chowanec	Mia	66.900		
D. Donaldson Audi	67.436	J. Paine	Westen	65.658	<b>USDF - A</b>				
A. Bean BR Danny's Secret	66.410	R. Chowanec	62.237	Kynynmont Blue Sapphire		L. Varga Johnstone's Finnmark	72.188		
R. Chowanec Kynynmont Kerrianna	66.026	R. Chowanec	57.500	Kynynmont Blue Sapphire		Y. Everson	Barock	71.875	
R. Chowanec	65.256	<b>INTERMEDIAIRE - II - BLM/GAIG</b>		C. Munoz	First Fisherman	C. Paul	Ebony	67.812	
Kynynmont Cooper O'Grady		A. Tarjan	Somer Hit	66.053	<b>USDF - B</b>				
M. Stevenson Zoe Claire	63.462	J. Greener	Mudzima	57.619	Y. Everson	Barock	70.313		
C. Korus Goldbaron	62.436	<b>INTERMEDIATE - B - BLM/GAIG</b>		L. Varga Johnstone's Finnmark		S. Stone	Noel	68.750	
L. Chumley Saracchi	62.436	A. Tarjan	Elfenfeuer	74.500	J. Hassold Ensign's Stately Mandolyn		67.500		
J. Turner Stilton	61.795	M. Orlob	Et Voila	72.900	C. Allen	Zachary	65.313		
M. Dujardin Suriolan	57.692	M. Orlob	Et Voila	69.700	<b>USDF - C</b>				
<b>FOURTH - 1</b>				K. Riley	Zanzibar	D. McMahon Dunscore Dayglow	68.750		
C. Munoz Borett	78.286	N. Binter	Olympus	57.300	J. Hassold Ensign's Stately Mandolyn		65.750		
S. St. Jacques Lucky Tiger	66.143	B. Centrella	Provineiano	57.000	C. Allen	Zachary	65.250		
S. Hayes Lome'	65.429	B. Centrella	Provinciano	56.000	C. Paul	Ebony	65.000		
J. Foulon Mr. M	64.857	<b>MFS - FIRST LEVEL</b>		S. Stone	Noel	I. Devos	Mia	64.250	
B. Sproule-Hansen Liberty	62.000								
A. Bean BR Danny's Secret	58.714								
<b>FOURTH - 2 - BLM</b>									
F. Magazzeni Findlay's Stuart	70.676								



# SHOW RESULTS

## TRAINING - 1 - J

D. McMahon Dunscore Dayglow 62.500  
I. Devos Mia 59.791

## TRAINING - 1 - S

E. Lambert Sheyenne 69.583  
M. Monica Madeline 66.875  
M. Byers Carmelo 64.583  
A. Szabo Mollohan's Pride 63.958  
L. Tell Fifth Avenue Flair 59.167

## TRAINING - 2

K. VanFossen Del Rio 68.571  
A. Szabo Mollohan's Pride 68.393  
E. Lambert Sheyenne 68.214  
S. Massone Fantom 65.179  
A. Chilcoat Lhemon Pie 65.000  
M. Monica Madeline 63.750  
D. Sheridan Cheval Z62.679  
M. Quigley Moon River 60.357

## TRAINING - 3

S. Massone Fantom 70.000  
D. Sheridan Cheval Z68.200  
M. Quigley Moon River 67.000  
A. Chilcoat Lhemon Pie 65.000  
S. Massone Ms. Della Wood 63.000

## FIRST - 1

C. Laurent Da Kiekste 69.300  
M. Chambers Gallant 68.600  
M. Blackwell Caramelo 66.552  
K. VanFossen Caduceus Quintanna 66.200

## FIRST - 1

A. Hoogsteen Sandra Lee 67.900

## FIRST - 2

A. Gimbel Eye Candy 73.900  
K. Fossen Caduceus Quintanna 66.400  
C. Ravenburg Keep The Faith 63.900  
K. VanFossen Del Rio 63.200

## FIRST - 3 - J

C. Ravenburg Keep The Faith 63.400

## FIRST - 3 - S

A. Gimbel Eye Candy 74.200  
C. Laurent Da Kiekste 68.700  
A. Szabo Sprach Zarathustra 63.900  
S. Mattos R U Atticus 62.900  
S. Massone Ms. Della Wood 62.400

## SECOND - TOC

M. Chambers (3) Gallant 68.000  
M. Chambers (2) Gallant 66.300  
M. Chambers (3) Codanz 64.286  
G. Kopp (1) Valentao 63.400  
A. Szabo (2) Sprach Zarathustra 61.400

## THIRD - TOC

L. Hickey (3) Whind In The Willows 63.589  
L. Hickey (1) Whind In The Willows 62.500

## FOURTH - TOC

E. Olijslager (2) Zar 63.200  
E. Olijslager (3) Zar 62.300

## MFS - FIRST LEVEL

M. Chambers Codanz 69.800  
S. Mattos R U Atticus 64.360

## 4 YO TEST

A. Hoogsteen Sandra Lee 76.200

## HEART'S JOURNEY SCHOOLING DRESSAGE & CT SHOW

August 16, 2014

Judges: Thompson (L) & Brosius (L)

## USDF - A

S. Keller Wetson 60.624  
M. Pacucci Phirst Phnight 59.400  
C. Green I Found Nemo 53.125

## USDF - B

S. Kurtz Lost In Thought 65.313  
S. Keller Wetson 63.440  
M. Pacucci Phirst Phnight 63.125  
C. Green I Found Nemo 56.875

## USDF - C - J

S. Kurtz Lost In Thought 67.500  
I. DeVos Mia 64.500  
M. Gidusko Amber 64.000  
M. TobarOliver Twist 63.000  
G. Herman April May's Chance 62.000

R. Schriber Starlight 61.000  
K. Grub Oliver Twist 59.750

## USDF - C - S

A. Stein Butters 63.500  
N. VanderBrink Mucho Macho 58.260

## TRAINING - 1 - J

S. Kurtz Lost In Thought 64.791  
M. Tichy Redford's Big Mac 60.210  
I. Devos Mia 59.200  
R. Schriber Starlight 57.500

## TRAINING - 1 - S

L. Hilvers Flynn 67.917  
L. Claus Miracle Mountain Tucker 64.380  
K. Killo Macy 61.042  
A. Stein Butters 60.420  
N. VanderBrink Mucho Macho 57.292

## TRAINING - 2

L. Hilvers Flynn 73.750  
K. Wright Ride The Waves 72.857  
M. Morehouse Violet 72.679  
M. Kunsman Madeline 69.107  
M. Fehr Must Be Loved 62.500  
L. Claus Miracle Mountain Tucker 61.250  
M. Morehouse Mack The Knife 60.000

## TRAINING - 3

M. Morehouse Violet 70.200  
C. Farrell Bella 68.200  
K. Wright Ride The Waves 64.000  
D. Pomeroy Rosmel's Amber Glo 62.800  
C. Kuntzman Duncan 62.200  
P. Zimmerman Campfire Girl 61.600  
A. Drosnock Mardi Gras Girl 61.000  
A. Norton Cosmopolitan 60.600  
R. Vales Starlight 60.400  
M. Higgins Redford's Big Mac 60.200  
L. Perweiler I Found Nemo 59.600  
L. Claus Miracle Mountain Tucker 58.000  
D. Drosnock A Touch Of Class 57.200

## FIRST - 1

I. Porvaznik Kaylynn's Way 66.910

E. Hochmiller Daddy's Dollars 66.900  
B. Rice Macy 62.410  
S. Koontz Elton 62.240  
S. Witmer Tucker 56.900

## FIRST - 2

B. Rice Macy 65.270  
S. Witmer Tucker 62.160  
H. Lenci Reflection 59.190

## FIRST - 3

H. Lenci Reflection 69.900  
S. Weisel Rising Sun 65.160  
E. Hochmiller Daddy's Dollars 63.870  
L. Porvaznik Kaylynn's Way 62.258  
H. Ahner Duncan 61.780  
M. Lane Honest Abe 61.129  
M. Lane Cinnamon Girl 57.742

## SECOND - 3

J. Barnathan Silver Mill 65.240  
S. Weisel Rising Sun 61.786  
J. Barnathan Renodje 56.548

## MFS - TRAINING LEVEL

A. Bielinski Skip, Zip and Zap 69.867  
C. Kuntzman Duncan 69.570

## MFS - PDD - TRAINING LEVEL

A. Bielinski Duncan 71.050  
H. Ahner Redford's Big Mac

## CT - BABY GREEN

D. Pomeroy Rosmen's Amber Glo 25.00  
M. TobarOliver Twist 34.37  
G. Herman April May's Chance 38.37

## CT - BEGINNER NOVICE

A. Drosnock Mardi Gras Girl 35.00

## CT - PRE-STARTER

S. Griffiths Gabe 29.37  
G. Herman April May's Chance 35.62

## CT - STARTER

S. Koontz Elton 35.79  
A. Sweeney Elton 37.89  
D. Drosnock A Touch Of Class 42.94  
M. Lane Cinnamon Girl 44.57  
W. Graham Besume 51.15

## BLUE SPRUCE DRESSAGE CENTER

August 17, 2014 Judge: Ebner (S)

## USDF - A - STARTER RIDER - J

K. Kalfayan Jumping Bean 63.438

## USDF - A - STARTER RIDER - S

M. Evangelisti Princess Ghanima 76.875  
S. Ceylan Michael's Destiny 70.313

## USDF - B - STARTER RIDER - J

K. Kalfayan Jumping Bean 65.625

## USDF - B - STARTER RIDER - S

M. Evangelisti Princess Ghanima 79.688  
S. Ceylan Michael's Destiny 67.500

## USDF - A - STARTER HORSE

M. Moran Madison 74.375  
G. Rickabaugh Cudjo 73.438

## USDF - B - STARTER HORSE

G. Rickabaugh Cudjo 77.500  
M. Moran Madison 73.125

# SHOW RESULTS

## USDF - C - STARTER RIDER - J

S. Puccio Coming In Hot 64.000

## TRAINING - 1 - STARTER RIDER - J

S. Puccio Coming In Hot 64.375

## TRAINING - 1 - STARTER RIDER - S

S. Ceylan Michael's Destiny 62.917

## USDF - C - STARTER HORSE - J

T. Shelhimer Gunna Getcha 65.750

## TRAINING - 1 - STARTER HORSE - J

T. Shelhimer Gunna Getcha 60.625

## TRAINING - 1 - O - J

A. Reverendo Badland's Billy 69.792

## TRAINING - 1 - O - S

N. McKinley Silver Lining 67.917

## TRAINING - 2 - J

A. Henderson Midsummer Night's Dream 67.679

A. Reverendo Badland's Billy 68.964

## TRAINING - 2 - J

N. Cribbin A Diamond In The Rough 66.400

A. Henderson Midsummer Night's Dream 63.000

## TRAINING - 3 - S

N. McKinley Silver Lining 64.200

## FIRST - 1 - J

N. Cribbin A Diamond In The Rough 61.207

## FIRST - 1 - S

N. McKinley Silver Lining 66.034

## FIRST - 3 - J

N. Cribbin A Diamond In The Rough 61.129

## FIRST - 3 - S

J. Sagui Midsummer Night's Dream 64.032

N. Rettino-Lambert Kosmic Karma 61.290

## SECOND - 1

I. Biely Kosmic Karma 65.857

G. Rickabaugh Mystical Magic 64.714

## SECOND - 3

G. Rickabaugh Mystical Magic 65.476

I. Biely Kosmic Karma 61.667

## THIRD - 1 - J

A. DiCiurcio Sundance 71.711

## THIRD - 1 - S

I. Biely Don Cooper MF 72.763

N. Vine Sable Beedazzled 60.000

N. Vine MVR Midnight Angel 59.737

J. Sagui The Toolman 59.211

N. Rettino-Lambert Irish Lore 59.079

## THIRD - 3

I. Biely Don Cooper MF 75.385

J. Sagui The Toolman 75.385

N. Rettino-Lambert Irish Lore 53.333

## FOURTH - 1

S. Lutgen Bonjour 67.000

H. Holbrook Better Than Gold 59.857

## FOURTH - 3

G. Rickabaugh Inspiration 62.875

S. Lutgen Bonjour 59.750

H. Holbrook Better Than Gold 57.500

## PRIX ST. GEORGES

G. Rickabaugh Paradox 67.632

L. Savage Inspiration 60.263

## INTERMEDIAIRE - I

I. Biely Randolph Scott MF 73.421

## MFS - THIRD LEVEL

N. Rettino-Lambert Irish Lore 60.000

## MFS - PDD - THIRD LEVEL

N. Vine Sable Beedazzled 70.750

I. Biely MVR Midnight Angel

## BOUNTIFUL BLESSINGS FARM SHOW

August 22, 2014 Judge: Barbosa (S)

## USDF - A - STARTER

K. Hennesy (SR) Pic's Pleasure 67.187

L. Wendel (SH) Denmark 66.250

J. Mastropiero (SR) 62.812

Equinox Chief Justice

D. Phillips (SH) Leo 62.187

## USDF - B - STARTER

A. Walenjus (SR) Fiddler's Choice 59.687

K. Hennesy (SR) Pic's Pleasure 57.187

L. Wendel (SH) Denmark 63.437

G. Ruggiero (SR) 59.575

Equinox Chief Justice

## USDF - C - STARTER

L. Walenjus (SR) Fiddler's Choice 65.000

M. Smith (SH) True Gold 63.750

A. Lorenzo (SR) Sunny 61.750

D. Phillips (SH) Leo 56.250

## TRAINING - 1 - STARTER

A. Lorenzo (SR) Sunny 63.333

M. Smith (SH) True Gold 59.583

C. Brennan (SR) Flash 59.375

## TRAINING - 1 - O

C. Arre Double Oh Dyl 65.416

## TRAINING - 2

K. Enderon Sadaredgo 74.642

J. Topinka-Nunn Rewarding Moments 70.357

S. Bilder The Magician 70.178

M. Gelrod Let It Rain 66.428

C. Arre Double Oh Dyl 65.000

## TRAINING - 3

S. Bilder The Magician 69.600

J. Topinka-Nunn Rewarding Moments 68.800

M. Gelrod Let It Rain 66.600

M. Chamas Sadaredgo 60.800

## FIRST - 1

B. Frayman Happy 64.310

S. Helm Snickers 61.724

## FIRST - 2

S. Helm Snickers 62.162

B. Frayman Happy 61.216

## FIRST - 3

B. Frayman Happy 62.741

## THIRD - 1

N. Vine Sable Beedazzled 60.921

## THIRD - 3

N. Vine Sable Beedazzled 59.487

## SUDDENLY FARM SHOW

August 22, 2014

Judge: Morrison (L)

## LEADLINE - W \*

P. Lott Max 72.812

B. Love Tuscadora 72.812

## LEADLINE - W/T \*

P. Lott Max 73.823

## USDF - A - STARTER RIDER - J

S. Bendorf Tuscadora 67.187

K. Ricciuti Tenoru 63.750

A. Silverman Joe Cool 62.812

## USDF - A - STARTER RIDER - S

P. Zimmerli Just The One 58.437

## USDF - B - STARTER RIDER - J

S. Bendorf Tuscadora 64.062

A. Silverman Joe Cool 63.437

K. Ricciuti Tenoru 59.062

## USDF - A - STARTER HORSE - S - DIV A

M. Niemcezewicz Royal Mariner 62.500

M. Zacharkow The Tin Man 62.187

## USDF - A - STARTER HORSE - S - DIV B

K. Stevens R U Trouble 65.000

## USDF - B - STARTER HORSE - S

M. Niemcezewicz Royal Mariner 65.000

M. Zacharkow The Tin Man 60.000

## USDF - C - STARTER RIDER - S

C. Whalen \* Ordained 68.500

C. Whalen Ordained 65.250

C. Horning Romeo 65.000

## TRAINING - 1 - STARTER RIDER - S

C. Horning Romeo 61.875

## TRAINING - 2 - J

C. Litwin He's A Devil Match 63.214

S. Bendorf Tater 59.928

K. Valentino F S Posh Amir 58.928

## TRAINING - 2 - S

A. Espinosa Berlin 71.607

E. Scelba-Johnson Couture 70.000

S. Parnell Patchamo 62.500

T. Mokszycki Little Victories 61.785

## TRAINING - 3 - J

C. Rasmussen Campbell Soup 70.200

C. Litwin He's A Devil's Match 63.600

K. Valentino F S Posh Amir 58.600

S. Bendorf Tater 55.800

## TRAINING - 3 - S - DIVISION A

E. Scelba-Johnson Couture 72.600

A. Espinosa Berlin 69.600

S. Parnell Patchamo 63.200

E. Scelba-Johnson Erm Arising 63.000

T. Mokszycki Little Victories 57.600

## TRAINING - 3 - S - DIVISION B

K. Theissen Santonio 64.200

L. Litwin Bentley 62.400

## FIRST - 1 - J

C. Rasmussen Campbell Soup 68.103

## FIRST - 2 - S

C. Caprio Amber's Mystique 67.972

J. Goeltz Duncan 67.567

L. Litwin Bentley 64.054

K. Theissen Santonio 62.567

## FIRST - 3 - S

C. Caprio Amber's Mystique 66.129

J. Goeltz Duncan 64.678

# SHOW RESULTS

## THIRD - 1 - J

A. DiCiurcio Sundance 60.789

## THIRD - 1 - S

K. Barbosa U Passe Partout 65.394

## THIRD - 3 - J

A. DiCiurcio Sundance 61.538

## MFS - TRAINING LEVEL

E. Scelba-Johnson EMR Arising 71.600

## FOURTH - 1 - S

E. Scelba-Johnson Djinn 65.857

## APPLEWOOD DRESSAGE, CT/CR SHOW

August 27, 2014

Judges: Alimonti (L) & Wooding (S)

## USDF - A

A. Szabo Thornley Rock Steady 64.375

L. Varga Johnstone's Finnmark 60.938

R. Pie R T 60.313

C. Allen Zachary 58.125

C. Paul Ebony 57.188

## USDF - B

A. Szabo Thornley Rock Steady 67.188

L. Varga Johnstone's Finnmark 64.375

C. Allen Zachary 59.688

S. Stone Noel 57.188

## USDF - C

L. Varga Johnstone's Finnmark 61.750

R. Pie R T 59.750

S. Stone Noel 58.250

C. Allen Zachary 58.000

C. Paul Ebony 56.750

## TRAINING - 1

S. Stone Noel 55.417

B. Graham Absolute Alex 55.208

E. Carwile General Tso 53.125

## TRAINING - 2 - DIVISION A

M. Quigley Moon River 74.286

M. Shannon Kennsington 61.428

B. Jones Rockford 56.357

## TRAINING - 2 - DIVISION - B

B. Graham Absolute Alex 59.464

E. Carwile General Tso 54.464

## TRAINING - 3

M. Quigley Moon River 73.000

L. Hannah Patty 71.200

J. Herbert Enzo 70.400

S. Rupert Black Magic 67.200

B. Jones Rockford 66.600

M. Shannon Kennsington 63.800

J. Peterson Uberzaun 61.800

## FIRST - 1

H. Cornell Guinevere 65.000

A. Hoogsteen That's Life 64.655

D. Fant Dante 61.724

## FIRST - 2

L. Scibetta Peter 70.676

L. Hannah Patty 67.568

D. Fant Dante 64.054

## FIRST - 3

S. Mattos R U Atticus 65.323

J. Story Little Girl 64.677

L. Scibetta Peter 64.516

## SECOND - TOC

S. Herster (3) Dario 71.786

J. McGarry (2) Cole 62.763

J. McGarry (3) Cole 55.714

## THIRD & FOURTH - TOC

S. Herster (3-1) Dario 69.211

D. Tomajko (4-3) Storytime 65.125

D. Tomajko (4-2) Storytime 63.649

T. Miller (3-1) Bossa Nova 62.632

## MFS - FIRST LEVEL

S. Mattos R U Atticus 63.400

## 4 YO TEST

A. Hoogsteen That's Life 72.60

## USEA - TOC

R. Barner (T/HC)\* Mr. Pops 35.91

L. Gallen (BN) Close Talker 37.50

H. Cornell (BN) Guinevere 38.00

R. Barber (T) Mr. Pops 38.18

K. Behrens (BN/HC) \* Premier Jet 40.53

L. Schatzkin (BN) Bound To Be King 43.68

L. Law (BN) Prince Charming 45.26

K. Fitzgerald (BN) Quik's Con Artist 48.42

## CT - X-RAILS

B. Kreipke Quik's Con Artist 43.16

G. Poniz Bound To Be King 43.68

S. Miller Mrs. Shadowfax 44.21

K. Chuirco Prince Charming 45.26

F. Doty Dancing Dame 45.79

## CT - STARTER

T. Whitty Mickey Finn 38.42

L. Gallen Close Talker 38.74

## CT - BEGINNER NOVICE

A. Semanchik Ingferrous 33.00

G. Warren Zander 34.50

K. Behrens Premier Jet 36.00

K. Bailey Quatrain 38.50

R. Thompson Majestic Sun 41.50

M. Harrigan 44.50

## CT - NOVICE

N. Trento Safe Harbor 35.00

M. Rafinski Banderillo 36.50

S. Rupert Black Magic 36.50

*Due to space constraints, the results might be a condensed version; complete results can be seen on the ESCTA website - [www.esdcta.org](http://www.esdcta.org).*

*HC or \* indicates score does not count. Questions? [results@esdcta.org](mailto:results@esdcta.org)*



# CALLING ALL ESDCTA FANS!

*GET INVOLVED AND MAKE A DIFFERENCE.*

THE ESDCTA NOMINATING COMMITTEE IS TAKING NOMINATIONS FOR THE 2015 SLATE OF OFFICERS: PRESIDENT, VICE PRESIDENT, SECRETARY, DRESSAGE AT-LARGE TRUSTEE AND EVENTING AT-LARGE MEMBER.

NOT INTERESTED IN AN OFFICER'S POSITION JUST YET? JUMP ON BOARD AS A COMMITTEE CHAIRPERSON OR MEMBER. LET US KNOW HOW YOU WOULD LIKE TO HELP ESDCTA BRING GREAT PROGRAMS AND SERVICES TO OUR MEMBERSHIP. YOUR INVOLVEMENT IS APPRECIATED!

PLEASE CONTACT NOMINATING COMMITTEE CHAIRPERSON SUSAN LAX AT 609-466-4178 OR EMAIL CHIVALRYHILLFARM@AOL.COM FOR MORE INFORMATION.

## MatchnRide.com

- ★ Search and Buy Horses
- ★ Shop the Marketplace
- ★ Sell Horses
- ★ Find a Trainer

**Eastern States Dressage & Combined Training**

**MEMBERS RECEIVE A 10% DISCOUNT**

on 90-Day Featured Horse Listings.

Use Promo Code: ESDCTA

Visit **MatchnRide.com** today!



*Know any ESDCTA members that have achieved and Milestones recently?*

*Did they rate up in Pony Club, earn their USDF Bronze, compete at their first CCI or CDI?*

***Please let us know!***

*e-mail: [vicepresident@esdcta.org](mailto:vicepresident@esdcta.org)*

### *Trinity Dressage - Eliza Banks*

Training and Instruction for all breeds.

Several locations available Including Golden Gait Farm, Millstone, NJ.

Freelance available in Central NJ.

732-910-7952 • [www.elizabanks.com](http://www.elizabanks.com)

### *Dressage Saddle:*

County Connection Dressage Saddle in excellent condition. 18M, Black, Elephant Print Skid Row Panel.

\$3695

Please call 732-856-0044.

The Dressage Competitions Committee is looking for members to expand the committee. Primary responsibilities center around planning the many aspects of managing the shows as well as participating at the show(s) as a part of the core management team. Dressage Competitions Committee meetings are held monthly via conference call. Please contact Terry Masters, [terrymasters@verizon.net](mailto:terrymasters@verizon.net) or 609-912-9401.



**BOUNTIFUL BLESSINGS FARM DRESSAGE SCHOOLING SHOWS**

14 Maxim Road, Howell, NJ 07731

[www.bountifulblessingsfarm.homestead.com](http://www.bountifulblessingsfarm.homestead.com)

ESDCTA Registered, ECRDA Sanctioned, NJ Western Dressage Association Affiliate

**New Awards Program for 2014!**

**Thoroughbred Incentive Program (T. I. P.) Awards**

For T. I. P. registered thoroughbreds only:

- High Point Awards
- High Point Dressage Thoroughbred (overall for series)
- High Point Young Thoroughbred Award

**Bountiful Blessings Farm Awards\***

- High Score Western Dressage Award
- Trainer's Award

\*Requires participation in at least 3 shows in the series

**DETAILS ON OUR WEBSITE!**



**Organizer/Secretary**  
Stephen Marciante  
14 Maxim Road  
Howell, NJ 07731  
732-272-7108

**2014 Show Schedule**

Show Dates	Opening Dates	Closing Dates	Judge
Sunday, June 29	May 19	June 22	Heidi Lemack (L)
Saturday, July 26	June 21	July 21	Kari Allen (L)
Friday Afternoon, Aug. 22	July 22	August 15	Kem Barbosa (S)
Saturday, Nov. 1	October 1	October 26	TBA



Does your saddle need to be fitted and flocked??

Improve your rides and your horse!

Call Stacie at 732-208-2760  
staciesaddles@comcast.net  
[www.trilogysaddles.com](http://www.trilogysaddles.com)

**Mini Farm Bordering State Rec Area!**

*MILES of designated Equine & ATV trails! Just 30 minutes from Easton!*

Custom colonial sits on 9+ acres of level, usable land w/ 3 paddocks, 3 stall barn w/ matted stalls plus feed/hay room, riding ring, room for mini-cross country course on site. Zoned for 15 horses.

3 bed, 2.5 bath, Mstr Bed w/ WIC, whirlpool tub, double vanity, 2 story foyer, full finished bsmt (partitioned- possible 4th bed), library w/ built in bookshelves, wet bar & Swarovski crystal chandelier. Oil heat, taxes approx \$5000. INCOME POTENTIAL: pad for mobile home w/ well/septic hook up ready to go... or build detached garage/barn.

**Priced to sell at \$369,000 [www.cshorseproperties.com](http://www.cshorseproperties.com)**

**Cindy Stys Horse Properties**

Request Info & Photos at: [horse2@epix.net](mailto:horse2@epix.net) or 570-656-0730



**Nancy Clarke**

Instruction and Training

Using Classical French Dressage techniques  
Creating Balanced Horses and Balanced Riders

(908) 996-6152

[www.castlegatefarm.com](http://www.castlegatefarm.com)

email: [nan@castlegatefarm.com](mailto:nan@castlegatefarm.com)

Hunterdon county, NJ & surrounding areas



**Blue Bridle™**

Excellence in Equine Insurance · Est 1982

For your equine insurance solutions  
call or click and connect!

[www.bluebridle.com](http://www.bluebridle.com)

(800) 526-1711 • (908) 735-6362

Mortality • Major Medical  
Surgical • Air Transit  
Farmowners • Equine Liability  
Care, Custody or Control

Blue Bridle Insurance Agency, Inc.  
P.O. Box 27, Pittstown, NJ 08867



Photo © Robert Neenstadi

Connect your business with our Membership New business membership package: \$150/year: A listing in the newsletter, Collective Remarks, the web site (with link) and in our Omnibus. Renew now to market your business to our equine community. Need an application? Go to [www.esdcta.org](http://www.esdcta.org)

## ESDCTA SUPPORTS OUR BUSINESS MEMBERS SEE YOUR BUSINESS HERE

	<b>Blue Bridle Equine Insurance</b> 1-800-526-1711 info@bluebridle.com bluebridle.com		<b>Castlegate Farm</b> 424 Kingwood Locktown Road Flemington, NJ 08822 Phone: 908-996-6152 www.castlegatfarm.com
	<b>Anjelhart Equestrian Center</b> 38 Millers Mill Road, Cream Ridge, NJ 08514 Ph: 609-758-7676 Cell: 732-580-9599 www.anjelhart.com		<b>Jersey Palms Farm</b> 177 South Stump Tavern Road Jackson, NJ 08527 P. 848-222-4901 jerseypalmsfarm.com
	<b>Chivalry Hill Farm</b> 609-466-4178 Ringoes, NJ info@chivalryhillfarm.com www.chivalryhillfarm.com		<b>Opening Circle Equestrian Services LLC</b> Full Service Equine Grooming & Care Doylestown, PA P. 508-404-8144 opeingcircle@gmail.com
	<b>Rhythm &amp; Blues Stables</b> Phone: 609-758-4918 12 Hill Road, Allentown, NJ RBLstables@aol.com www.rhythmandbluesstables.com		<b>Windy Hollow Hunt</b> <a href="http://www.windyhollowhunt.org">http://www.windyhollowhunt.org</a>
	<b>Horse Duds and Suds</b> Equine Laundry Service 600 Valentine Street, Hacketstown, NJ 07840 1-800-816-3882 info@horsedudsandsuds.com		<b>Carousel Farms</b> 8 Linn Smith Rd, Augusta, NJ 07822 P: 973-219-1044 www.carouselfarmsnj.com carouselfarms@yahoo.com
	<b>Amy Howard Dressage, LLC</b> FEI Competitor & Trainer 908-310-9384 Seargentsville, NJ ashoward@hotmail.com www.amyhowarddressage.com		<b>Iron Spring Farm</b> 75 Old Stottsville Rd Coatesville, PA 19320 610-383-4717 www.ironspringfarm.com
	<b>Susan Stickle Photography</b> 973.885.3203 hoofprints1@aol.com <a href="http://www.susanstickle.com">http://www.susanstickle.com</a>		<b>Stonehenge Dressage</b> FEI Competitor and Trainer Colts Neck NJ 603-568-2843 aurelia228@hotmail.com www.aureliatansey.com
	<b>Chesterfield Farm</b> 141 Georgetown-Chesterfield Road Chesterfield, NJ 08515 609.291.8008 chesterfieldhorsefarm@yahoo.com		<b>Stone Horse Farm</b> 35 Sutton Road, Lebanon, NJ 08833 Phone: 570 460 5184 E-mail: jeb444@mac.com www.stonehorseequestrian.com
	<b>Hearts Journey Stables</b> 425 Kromer Road, Wind Gap, PA 28092 610-863-6616 <a href="http://heartsjourneystables.com">http://heartsjourneystables.com</a> mmorehouse@epix.net	 Pleasant Ridge Farm llc	<b>Pleasant Ridge Farm</b> 122 Barn Swallow Lane Cresco, PA 570-856-4977 www.pleasantridgefarmllc.com
	<b>CLR Stables</b> Cindy Roesener Stockton ,New Jersey 908-797-9754 croesener@hotmail.com • cir-stables.com		<b>Heather Mason</b> Flying Change Farm 60 Sutton Road, Lebanon, NJ 08833 908-797-2634 Flyingchangefarm.com
	<b>Dr. Lisa Toaldo Family and Cosmetic Dentistry</b> Matamoras, PA and Dingmans Ferry, PA P: 570-491-5147 & 570-828-8000		<b>Hawk Hollow Ranch</b> 100 River Road West Bedminster, NJ 07921 908-256-9787 www.hawkhollowranch.com



PRESORTED  
FIRST-CLASS MAIL  
US POSTAGE PAID  
FLEMINGTON, NJ  
PERMIT NO. 21

**Laurette Simanski-Snook**  
12 Fairway Drive  
Toms River, NJ 08753  
membership@esdcta.org

## THE 2014 ESDCTA SHOW SEASON CALENDAR

Please refer to the ESDCTA Omnibus for details.  
All ESDCTA-registered shows are eligible for volunteer hours.



WHEN & WHERE	SHOW TYPE	SHOW DATE	OPENING	CLOSING
Somewhere Farm	Dressage Schooling	Saturday, October 4, 14		
ECRDA Championships	Dressage Schooling	Sunday, October 5, 14	8/1/14	9/3/14
ESDCTA Eventing Championships	Championships	Sunday, October 5, 14		
ESDCTA HT	Horse Trials	Sunday, October 5, 14		
LVDA @ Molasses Creek II	Dressage Schooling	Sunday, October 5, 14	9/5/14	9/26/14
Carousel Farm	Dressage Schooling	Saturday, October 11, 14	9/11/14	10/3/14
ESDCTA Garden State Classic	USDF/USEF	Saturday, October 11, 14	8/26/14	9/19/14
Saddlebrook Ridge	Dressage Schooling	Saturday, October 11, 14	9/10/14	10/4/14
Bucks County Schooling Horse Trials	Schooling HT	Sunday, October 12, 14		10/4/14
Burlington Cty Young Riders 4H	Dressage Schooling	Sunday, October 12, 14	9/1/14	10/5/14
ESDCTA Cross Country	XC Schooling	Sunday, October 12, 14		
ESDCTA Garden State Classic	USDF/USEF	Sunday, October 12, 14	8/26/14	9/19/14
Dressage at Bucks County Horse PK	USEF/USEF	Saturday, October 18, 14	8/20/14	10/6/14
Blue Spruce	Dressage Schooling	Saturday, October 18, 14	9/11/14	10/11/14
Oxbow Farm	Dressage Schooling & HT	Sunday, October 19, 14		10/9/14